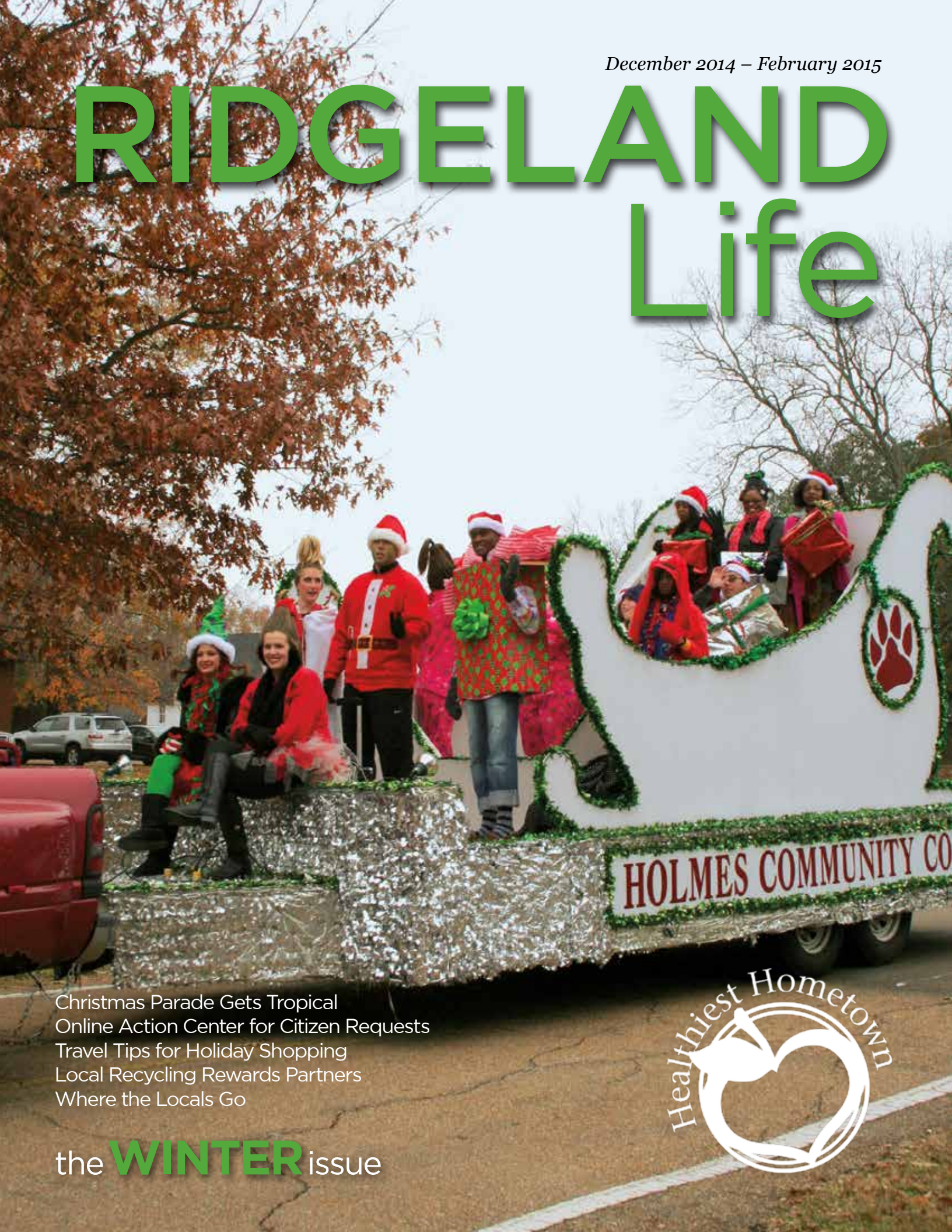


December 2014 – February 2015

RIDGELAND Life



Christmas Parade Gets Tropical
Online Action Center for Citizen Requests
Travel Tips for Holiday Shopping
Local Recycling Rewards Partners
Where the Locals Go

the **WINTER** issue



From the Mayor

As I write this message for Ridgeland Life, it's hard to believe it's almost 2015. This has been a fantastic year for our great city. We have had so many accomplishments as a city, receiving many awards for the outstanding work that is being done here.

It seems like only yesterday we started the construction to widen Lake Harbour Drive, and now it's finished and providing a much needed transportation corridor that is second to none. I look forward to the excitement as we conclude the design process and begin construction in the very near future for Lake Harbour Drive Extension. Once this is done, the City of Ridgeland will have an east-west transportation corridor that reaches all the way from Highland Colony Parkway into Rankin County.

It is also exciting that in 2015, we will see the end of construction of the new interchange between the City of Ridgeland and Madison. This new project will provide much needed traffic movement both in Ridgeland and Madison.

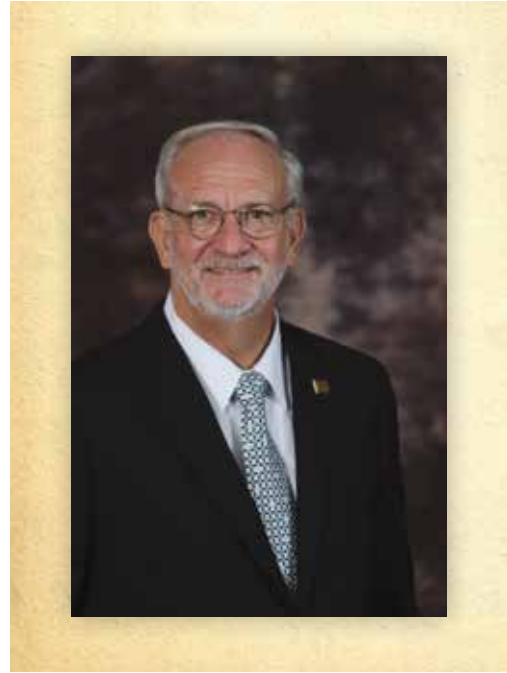
As we look to the New Year, I am excited about the work that is being done preparing our City Center location. Most of the concrete has been removed and our consultants are working diligently to design the Center City with a new City Hall coming first. This is truly going to be an asset for our City and is the main project in the City of Ridgeland's Master Plan.

On an economic development note, it is exciting that Ridgeland is one of the first cities in Mississippi to provide fiber-to-the-home. This gigabit per second service is going to be a game-changer, not only for our residents, but also for our businesses and schools. This service will absolutely put the City of Ridgeland on the map as one of the most futuristic cities in America! It is also with excitement that I welcome the new restaurant Seafood R'evolution. This new addition to the City's fine dining restaurants is another example that Ridgeland has the best opportunities in our state and in the South.

I hope each of you have a blessed holiday season. Let's make 2015 the best yet for our City.

Happy New Year!

Gene F. McGee



Gene McGee
Mayor of Ridgeland

RIDGELAND Life

TABLE OF CONTENTS

UPCOMING EVENTS

Get Tropical This Christmas	4
Margaret May to Perform at Senior Adult Christmas Luncheon	5
Light Up The Park	5
Mississippi Metropolitan Ballet Presents The Nutcracker	6-7
Christmas Tree Curbside Collection and Recycling	7
Christmas Decorating Contest	8
Comedian and Illusionist to Headline Valentine's Banquet	8

NEWSWORTHY

Online Action Center Available for Citizen Requests	9
High School Mountain Bike Team Forming	9
Winter Holiday Fire Safety	10
Announcing Local Recycling Reward Partners	10-11
Where The Locals Go	12-13
Ridgeland Earns 22nd Annual Award for Financial Reporting	12
Ridgeland Adds CNG-Fueled Vehicles to Public Works Fleet	14
Alternate Travel Routes Save Time for Holiday Shopping	15

RECRE8

Recreational Facilities	17
Special Events	18
Athletics	18-19
Superstar Seniors	19-22
Tennis	22

SCHOOLS IN RIDGELAND

Ann Smith Elementary	23-25
Highland Elementary	25-27
Olde Towne Middle School	28
Ridgeland High School	29-30
Holmes Community College	31-32
Christ Covenant School	33
St. Andrew's Episcopal School	33
Veritas	33

RIDGELAND PUBLIC LIBRARY

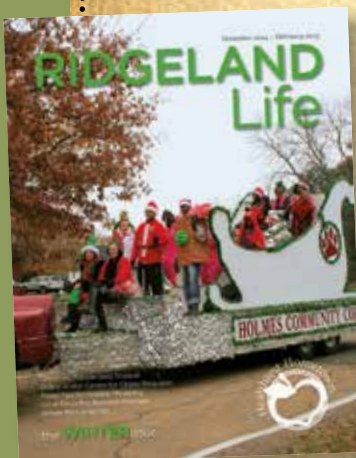
Children and Family Programs	34-35
------------------------------------	-------

CHAMBER OF COMMERCE

Business After Hours and Events	36
to come	36
Ridgeland Chamber's Make A Difference Day	37

WHO & WHERE

Ridgeland Departments	38
City Meetings	38
City Directory	38
Ridgeland Aldermen	39



ON THE COVER: *Be Merry, Be Bright and Be Tropical this Christmas at the Ridgeland Christmas Parade! Don't miss the most festive parade this season has to offer. It's on Saturday, Dec. 6 at 2 p.m. traveling from Holmes Community College, down Maple Street, Jackson Street and Sunnybrook Road.*

Editor and Publisher
Sandra Rives Monohan,
City of Ridgeland

Sponsorship
Julie Cox,
City of Ridgeland

For sponsorship opportunities, contact Julie Cox at Julie.Cox@RidgelandMS.org.

For information about *Ridgeland Life*, contact Sandra Rives Monohan at Sandra.Monohan@RidgelandMS.org.

Graphic Design
Jackson Data Products, Inc. and
Service Printers, Inc.

Printing
Jackson Data Products, Inc. and
Service Printers, Inc.

Get Tropical this Christmas

Leave your worries behind and enjoy the carefree feeling of the tropics this holiday season with a tropical-themed Christmas Parade. Bring your festive holiday spirit and come out to watch “A Tropical Christmas” parade as it travels through Olde Towne Ridgeland. You will get to see marching bands and flag corps, JROTC, floats by businesses, organizations and churches, police cars and motorcycles, fire trucks, antique fire truck and costumed recumbent cyclists! It’s set for Saturday, Dec. 6 at 2 p.m.

The route will begin and end at the Holmes Community College Campus on Ridgeland Avenue. The parade will head eastbound on Ridgeland Avenue, turn southbound on Maple Street, and then turn westbound on Jackson Street. Travel to turn right onto Sunnybrook Road and finish back at Holmes Community College. West Jackson Street will be closed from Sunnybrook Road to Maple Street during the parade.

If your business or group would like to enter the parade, contact the Rec and Parks Department at 601-853-2011 or download the form from www.ridgelandms.org. Awards will be given after the parade to winning entries.

Don’t Worry, Be Happy! And enjoy “A Tropical Christmas” this holiday season.



MARY MARGARET MAY TO PERFORM AT SENIOR ADULT CHRISTMAS LUNCHEON



Mark your calendar as Broadmoor’s JOY Group and Ridgeland Recreation and Parks co-host a Christmas Luncheon with Christmas vocalist Mary Margaret May. Enjoy a delicious lunch and great entertainment. The event is scheduled for Thursday, Dec. 18 at 11:30 a.m.

Mary Margaret has released three albums, *In the Shadow of Thy Wing*, *Upon a Night* and *I Asked the Lord*, all of which are available on iTunes. Ms. May currently teaches voice and beginner piano lessons at Fondren Guitars in Jackson.

Seating is limited. Tickets are \$7 and should be purchased prior to the event. They are available at Broadmoor Baptist Church, Ridgeland City Hall and Ridgeland Recreational Center. Broadmoor Baptist Church is located at 1531 Highland Colony Parkway in Madison. Call 601-898-2345 for more details.

Light Up The Park

The public is invited to drive through Freedom Ridge Park and enjoy the City’s special holiday light tour. Starting Monday, Dec. 1, the park will be lit every night until the first of January. It will be full of holiday lights and Christmas decorations. Add this light tour, provided by the City of Ridgeland, to your neighborhood touring this Christmas.



Dec. 1 - Jan. 1
at
Freedom Ridge Park

Mississippi Metropolitan Ballet Presents Holiday Classic *The Nutcracker*

The Mississippi Metropolitan Ballet, under the direction of Jennifer Beasley, will present their annual production of Tchaikovsky's *The Nutcracker* Dec. 13-14 at the Jackson Academy Performing Arts Center, on Ridgewood Road in Jackson. Guest artists Ashley Ellis and Paul Craig will dance the leading roles. Ellis and Craig are professional dancers with the Boston Ballet.

Performances are scheduled for 7:30 p.m. Saturday, Dec. 13, with matinee performances at 2 p.m. Saturday, Dec. 13 and Sunday, Dec. 14. The "Nutcracker Sweet" Tea Parties will follow the matinee performances Saturday and Sunday at 4 p.m. The tea party includes a whimsical candy buffet, savory appetizers and pastas from the Strawberry Café, festive decorations, and the opportunity to meet the characters from the ballet.

The timeless story of Clara and the Nutcracker Prince has delighted audiences of all ages for more than one hundred years. The grand ballet takes Clara and the audience from the festive party scene of toys, soldier dolls and puppets, through the

magical Land of Snow and finally to the Land of Sweets. From the wondrous beauty of the Sugarplum Fairy, to the excitement of the mice and soldier battle scene, to the comical Mother Ginger and her Polichinelles, there is something to entertain everyone.

The Mississippi Metropolitan Ballet, a nonprofit ballet company and a member of the Southeast Regional Ballet Association, presents its annual production of *The Nutcracker* with participation from more than 100 dancers from the metro Jackson area. Dancers are selected through an audition process from Mississippi Metropolitan Dance Academy students. The Mississippi Metropolitan Dance Academy is the official school of the Mississippi Metropolitan Ballet.

Guest artists Ellis and Craig will dance the roles of the Sugarplum Fairy and her Cavalier. Ellis is a Principal Dancer with the Boston Ballet, and Craig is a Soloist with the Boston Ballet. Ms. Ellis began her training in her native California, and began her professional career with the American Ballet Theatre. She has



Shown (left to right) are Abigail McCaughan, Mary Kate Shearer and Laura Lee Boyles of Mississippi Metropolitan Ballet. Photo credit: Leah Kackley.

been a Principal Dancer with Boston Ballet since 2013. Mr. Craig trained at Virginia School of the Arts, as well as the Boston Ballet School. He joined Boston Ballet in 2008.

Additional guest artists include Andrew Brader, professional dancer with Complexions Contemporary Ballet, as the Snow King and Waltz of the Flowers Cavalier, and Dexter Bishop, a Clinton native and MMB alumnus currently dancing professionally with Missouri Ballet Theatre, in the Russian divertissement. Donovan Davis, a graduate of the Belhaven University Dance Department, will perform the role of The Nutcracker. The role of the Snow Queen will be danced by MMDA student Caroline Jones of Flowood and the role of Clara will be danced by Emma Ladner, also an MMDA student who resides in Brandon.

Ridgeland members of Mississippi Metropolitan Ballet Company will dance various roles. Laura Lee Boyles, junior company, will perform Rosebud and Russian. Senior alternate Abigail McCaughan will fill the roles of Clara's Friend and Rose. Soloist Mary Kate Shearer adds the role of lead Mirliton to her repertoire. She will also dance Columbine Doll and Snowflake this year.

The Nutcracker is the perfect way to ring in the holiday season and to introduce children to the power and beauty of classical dance. "At the heart of Mississippi Metropolitan Ballet's mission is our quest to share the magic of dance with the people of our community, and to encourage a love of the arts in the hearts and minds of our audience members," said Jennifer Beasley, Artistic Director. "We are proud to again be presenting our annual production of *The Nutcracker* to our community; it is both our most important outreach tool, offering many in our community their first exposure to the ballet, but also a time-honored holiday tradition. It is just not the holiday season without *The Nutcracker!*"

Tea Party seating is reserved at tables of 10. Tickets for the Tea Party must be purchased in advance, and are sold separately from performance tickets. Performance tickets are available for \$20 or \$22, with discounts offered for senior citizens. Tickets for the Tea Party are \$25. Tickets can be purchased online at www.msmetroballet.com or by calling 601-853-4508.

Mississippi Metropolitan Ballet is generously sponsored in the 2014-2015 season by The Mississippi Arts Commission, The National Endowment for the Arts, LeFleur Limousines, BankPlus, Harper, Rains, Knight & Co, Trustmark, The Strawberry Café, BlueCross BlueShield of Mississippi, and Ergon.

For more information on the Mississippi Metropolitan Ballet, visit www.msmetroballet.com or email info@msmetroballer.com.

Do you love the holiday decorations and lights?

Send us photos of your favorite holiday scenes around Ridgeland and we will publish our favorites. Email: sandra.monohan@ridgelandms.org

Christmas Tree Curbside Collection and Recycling



The Ridgeland Recreation and Parks Department will offer curbside collection of Christmas trees again this year. Place your tree on the curb without lights, decorations, stands or bags. Collection dates are as follows: Dec. 26, 29 and 30 and Jan. 5-9. You may also drop your tree off at Freedom Ridge Park, 235 W. School Street. The trees are mulched for use in natural areas at the park. If you would like to pick up some mulch, call the Recreation and Parks office at 601-853-2011 to find out when it is available.

CHRISTMAS DECORATING CONTEST

Deck the halls with boughs of holly, Fa la la la la, la la la la...or in our case, yards and porches!

Ridgeland Recreation & Parks will accept nominations for the Christmas Decorating Contest until Dec. 5. Categories for

this year are Door and Porch, Children's Choice, Business, Judge's Choice and Overall. Judging will take place Monday, Dec. 8 (weather permitting). Please call the Recreation & Parks office at 601-853-2011 to make a nomination.



208 Sawbridge



662 Muirwood Circle

Comedian and Illusionist to Headline Valentine's Banquet



Join us Monday, Feb. 9, 2015 for a special Valentine's event for all area senior adults. Entertainer Mark Robinson will headline the event. He is one of the hottest comedy acts in the country.

His hilarious standup comedy has garnered him rave reviews and an invitation to open for Jeff Foxworthy. His amazing illusions have won him multiple awards and numerous bookings with Harrah's Casino. In Mark's show you will laugh and be amazed at the same time.

Mark's act for the Valentine's Banquet will include audience participation, an onstage assistant and some of his biggest tricks as well as music. So, get

your ticket before they sell out and come prepared to be truly entertained and maybe even to participate yourself!

The Senior Adult Valentine's Banquet will be held at Highlands Presbyterian Church in Ridgeland Monday, Feb. 9; starting at 5 p.m. Tickets are only \$5/person and will be on sale at Ridgeland City Hall and the Ridgeland Recreational Center. Tickets must be purchased before the event. For more information, call the Rec and Parks office at 601-853-2011.



Online Action Center Available for Citizen Requests



The City of Ridgeland has recently launched a new way for citizens to request service from city employees. You may notice a street light that's burned out, a code violation by your neighbor or an animal running at large, for example. Now, you may go online to the city's website at www.ridgelandms.org and complete an action center request.

"We are pleased to offer this new online service for the citizens of Ridgeland. Phone calls and emails are always welcome when there is a service need, but the Online Action Center website directs the service to the correct department and provides a way for the citizen to check the progress of the requested action. As always, we remain open and accountable to citizens!" remarks Paula Tierce, City Clerk and Director of Finance and Administration.

When you go the city's website, find the tab for "Online Services" within the quickLINK Dashboard on the right side of the home page. The first listed option, once you click on that tab, is to pay your utility bill or submit an action center request. Click on that option and you will be directed to a third party website where you can complete either or both of these functions.

Log in or register as a member in order to submit your request. Use the scroll down menu to choose your request type and enter the property address. You may describe your observations or explain the action needed in the description box. Complete the required contact information and submit. You will be given an incident number that you may use to track the progress of your request.

The City of Ridgeland is pleased to provide this additional way of contacting city departments and following up on service requests. There is an extensive list from which to choose and city officials want to encourage you to utilize this convenient online service.

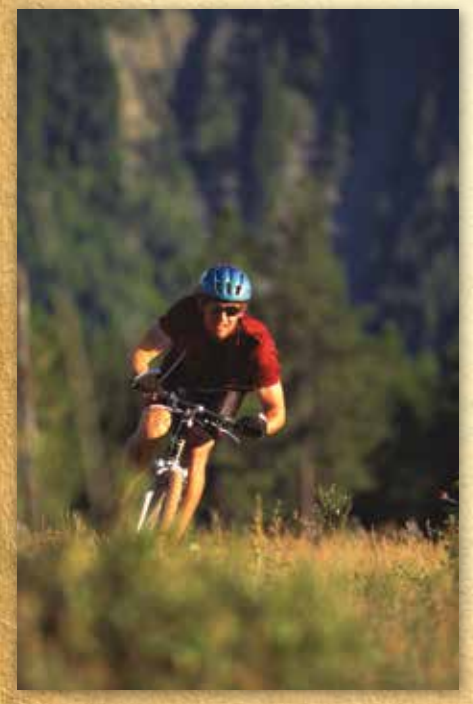
If you have any questions, call 601-856-7113.

High School Mountain Bike Team Forming for 2015

Do you love being outdoors? Are you looking for an alternative sport to traditional high school sports? Well, look no more!

This is the first year for Mississippi to have a high school mountain bike team. The Mississippi Composite will be competing in the Alabama NICA League for the first year while working on getting the Mississippi League started for 2015. The league is sanctioned through NICA, the National Interscholastic Cycling Association, www.nationalmtb.org. The team is open to all female and male students in ninth -12th grade, across the state of Mississippi. No experience is needed.

For more information, contact the Team Director and Head Coach, Jayce Powell at 601-506-9829 or jayce@indiancyclefitness.com.



Winter Holiday Fire Safety

Winter holidays are a time for families and friends to get together. The indoor and outdoor lights, heaters, fireplaces, candles and flammable decorations put our gathering places at a greater risk for fire. Following simple tips and being aware of a few important facts will ensure a happy and fire-safe holiday season.

- Make sure your Christmas tree is at least 3 feet away from any heat source. Nearly half of holiday decoration fires happen because decorations are placed too close to a heat source.
- Replace any string of lights with worn or broken cords or loose bulb connections. Connect no more than three strands of mini light sets. Use clips, not nails, to hang lights so the cords do not get damaged.
- Always turn off light strings and blow out candles before going to bed or leaving home.
- Two of every five home decoration fires are started by candles. Blow out candles before leaving the room. Keep decorations away from flames. Choose flame retardant or flame resistant holiday decorations.
- Dried-out trees are a fire danger. Utilize the City of Ridgeland Christmas tree Recycling program to help you dispose of that tree sooner.
- Bring outdoor electrical lights inside after the holidays to prevent hazards.
- Test your smoke alarms!

Throughout the winter, be sure to stay safe with your

use of space heaters and fireplaces. Keep at least 3 feet of clear space around a space heater. Have your furnace and chimney cleaned on a regular basis. Do not use flammable liquids to start a fire. Keep a screen in front of the fireplace to prevent embers from jumping out. And, last but not least, be sure the fireplace is out before going to sleep!

Source: www.NFPA.org/education



Announcing Local Recycling Reward Partners

The City of Ridgeland provides each residence with a recycling cart that makes it easy to get your recyclables to the curb and to recycle more than with the recycling bin of years past. If you recycle in Ridgeland, you are automatically collecting reward points, redeemable for gift cards, discounts and giveaways at national retailers.

Now, we are proud to offer citizens local rewards through our local reward partners that have recently joined Recyclebank. These local retailers are offering rewards for recycling! Collect your reward points, print out the offer and bring it to one of the partners listed below. As this list grows, we will be letting you know through *Ridgeland Life*, the city's website at www.ridgelandms.org, the city's eNewsletter and social media.

Go to www.Recyclebank.com and register if you have not already done so. Just for registering, you are given 350 points. Promo codes are also available at City Hall for 25 points. Get started today! If you are already a Recyclebank member, then check your points and start redeeming at our local reward partners!

Fleet Feet Sports www.fleetfeetjackson.com

Lesley Holleman, owner, and her team of Fitlosophy™ specialists

of Fleet Feet Sports, enjoy helping runners and walkers stay on the trail. Fleet Feet is not just a place to purchase the best fitting shoes and clothing. They give



back to the community by hosting a selection of weekly runs, special event runs, support and training. Beginner training programs are available, and if you are already running and want to tackle that first marathon, you can find the support you need at Fleet Feet.

Now, as you recycle and earn reward points, you can redeem points for \$20 off at Fleet Feet Sports. Thank you, Fleet Feet Sports, for showing your support for recycling. Visit Fleet Feet located at 500 Highway 51 North, Trace Station Shopping Center.

The College Corner www.collegecornerstore.com

Scott and Paula Werne of Ridgeland are excited to bring college team apparel, tailgating gear and gifts to shoppers. The owners' vision of a one-stop shop for college sports fans and tailgaters has been very well received! This new business in Ridgeland is going gangbusters, but they work diligently to keep stock in the store for their new and returning customers. Currently, The College Corner sells apparel and accessories for the University of Mississippi, Mississippi State University, the University of Southern Mississippi, the University of Alabama and Louisiana State University with plans to add additional teams' merchandise as the store inventory grows.

Thank you, College Corner, for your commitment to recycling and becoming a local rewards partner with the City of Ridgeland. Be sure to visit College Corner Store, located in the northeast corner of Trace Station Shopping Center. Their \$20 discount can be found at www.recyclebank.com.



Indian Cycle www.indiancyclefitness.com

Indian Cycle, local bicycle dealer and community-minded business, is one of the first businesses to become a Recyclebank Local Reward Partner with the City of Ridgeland. Earning the Silver Award for Bicycle Friendly Business, Indian Cycle offers expert advice, bike repair, bicycle safety education, group bike rides, precision bicycle fit and oh, yeah, bicycles, helmets, apparel and accessories!

Indian Cycle will be offering \$20 discounts to Recyclebank members. Pictured here at the Indian Cycle retail location at 677 S. Pear Orchard Road (left to right): Jayce Powell, Scott Cuppersmith and Trent Scott. Come visit them and the other experts at Indian Cycle.

Lost Pizza www.lostpizza.com/ridgeland/

Joining the Ridgeland restaurant scene earlier this year, Lost Pizza has become quite the hit among pizza enthusiasts. Founded in the Mississippi Delta, Lost Pizza prides itself on fresh ingredients and a cool, funky atmosphere. Preservative-free cheeses and meats, freshly cut veggies, secret sauce recipes and dough from scratch add up to some of the best ingredients around.

Partnering with Recyclebank to provide local rewards was a no-brainer for owners Bruce Quinton and Chuck Camarato. Get 10% off by using your recycling reward points at the Ridgeland location in Trace Station Shopping Center.

If you would like more information about Ridgeland's recycling program or if your business is interested in joining Recyclebank as a local rewards partner, please contact the Public Works Department at 601-853-2027.



Where the Locals Go

The City of Ridgeland has chosen to highlight a variety of local businesses in this and upcoming issues of *Ridgeland Life*. This issue is focusing on businesses that have a relatively long history. Each of the businesses have been doing what they do best for more than 30 years and have maintained retail locations in Ridgeland for more than 10 years. These businesses and their owners are known well by local, longtime residents who would highly recommend them to any inquiring newcomers to Ridgeland.

There are so many local businesses in Ridgeland to discover. We suggest that you consider stepping out of the box and patronize the smaller, locally owned businesses when possible. Many of them have served Ridgeland and surrounding area residents for multiple years, but some of them are new. Most, if not all of them, compete for your business with national or regional chains that have large advertising budgets.

The individual attention that you receive from a small local business owner is unparalleled. Give your local Ridgeland business a chance to serve you.

Lillie's Alterations

6955 Old Canton Road at Spillway Village • 601-957-8742

Tuesday – Friday, 10 a.m. – 5 p.m.

Owner: Lillie B. Foust

“I didn’t see me owning a business, but I thank God for it every day.” When you enter Lillie’s Alterations, it is obvious that the owner and professional seamstress of more than 30 years has a thankful heart. It permeates her smile, her friendly approach to



Lillie B. Foust at her alterations business in Spillway Village.

her customers, and the impeccable quality of her work. “I love it. I love what I do,” remarks Lillie Foust with her characteristic smile. “I’m honored to be serving my customers.”

Her customers equally appreciate her. “I have the best customers around,” says Lillie. They are fiercely loyal and will travel from other parts of Mississippi for Lillie’s work. Ridgeland locals have long known about Lillie. She has been a mainstay in Ridgeland for almost 15 years, moving here from the Delta in 2000.

Lillie does not advertise except for a Yellow Pages listing. If you are new to the area, you might not find her tucked away in the corner of Spillway Village on Old Canton Road or searching online. But, if you talk to enough locals, you will soon learn about

Ridgeland Earns 22nd Annual Award for Financial Reporting



The City of Ridgeland was recently awarded the Certificate of Achievement for Excellence in Financial Reporting for the 22nd consecutive year! The Certificate is the highest form of recognition in the area of governmental accounting and financial reporting. Staff members that are primarily responsible for the City of Ridgeland’s award-winning Comprehensive Annual Financial Report were recognized at the Oct. 7, 2014 Mayor and Board of Aldermen Meeting. Pictured with Mayor Gene F. McGee, left, are: Ina Byrd, Deputy Director/Information Systems; Ericka Brown, Accounts Payable/Payroll Administrator; Ashley Burton Daniel, Finance Manager; and Paula Tierce, Finance Director and City Clerk.

In other financial news, the City of Ridgeland was assigned an Aa2 Rating by Moody’s Investors Service. According to the Global Credit Research Report issued Oct. 28, 2014, “The Aa2 rating reflects the city’s ongoing tax base growth, favorable wealth levels, and a solid financial position maintained through conservative budgeting practices.”

her business and the quality of her work.

Lillie's favorite jobs are formals. "I get a thrill from altering formal dresses. I have a finished picture in my head of what it is going to look like. I enjoy the challenge. It's like doing surgery to a garment!"

Lillie has three boys who are grown now with children of their own. There was a time when she was a young mother and she needed to make a certain amount of income to care for them. When she was working for \$8 per hour for someone else and knew she needed more, she learned about Ridgeland and moved from the Delta to better support her family. The rest is history.

Polk Decorative Center

6710 Old Canton Road • 601-957-1193

www.polkdecorative.com

Monday – Friday, 7:30 a.m. – 5 p.m., Saturday, 8 a.m. – 12 p.m.

Owner: Pat Polk

When it comes to selecting paint for your home, personal assistance from an expert is necessary for the decorating-challenged. Getting satisfactory results the first time is invaluable in saving time, effort and money. You can gain that expert advice that comes from years of experience at Polk Decorating, the choice for locals in Madison County as well as the City of Jackson and Rankin County since 1981.



Pat Polk has been helping residents with their home decorating for more than 30 years.

Polk Decorating has been helping homeowners turn their house into a home reflective of the owners' personal styles since their first business location on Hwy 49 South. Owner Pat Polk said that her husband was a residential contractor who wanted direct access to decorating supplies, so he expanded his business into a retail store.

Pat Polk shared, "After the flood of '79, we moved to Ridgewood Road, then to Old Canton Road. We have been in this location since 1981. It's a great location, at the corner of three counties within a couple of miles, and with lots of traffic."

Best known for paint, Polk also sells a lot of drapery and upholstery fabric, wall coverings, as well as wood and floor tile. Lowe's and Home Depot refer their customers to Polk, especially for certain stains and other products that the big box retail stores do not carry.

Individualized service is what they do best. Pat Polk adds, "We assist customers with custom matches for colors, and we make lots of custom fabric orders. We enjoy helping customers get

established in their homes. We like to see our customers satisfied and happy with whatever product or products that they choose."

When asked what the future holds for Polk Decorating, Pat Polk laughs and shares that she is beyond retirement age but likes to work as long as she can be useful. Her daughter works with the books and is very good at decorating, she adds. We hope that Polk Decorating continues on for a very long time to come.

Ridgeland Taekwondo

676 S. Pear Orchard Road • 601-853-1113

www.ridgelandtkd.com

Junior Schedule and Adult and Teen Schedule available online, at school or via phone

Owner: Dennis Conway

Dennis Conway, owner and chief instructor at Ridgeland Taekwondo, has been teaching traditional martial arts in Ridgeland for more than 25 years. He opened his first studio in Mobile, Alabama in 1984 and moved to Ridgeland in 1989. His studio is located on Pear Orchard Road, across from Indian Cycle.



Dennis Conway, 8th degree black belt, owner and chief instructor at Ridgeland Taekwondo.

As an 8th degree black belt and instructor for more than 30 years, Conway knows what Taekwondo can do for the student. "It's

proven. Kids start making better grades. Their concentration improves. It builds self-esteem and character."

"Adult students gain confidence and authority. It can result in doing better in business. I've had salespeople tell me that they started making more money after taking lessons," added Conway.

"Students learn to not be quitters here." A "Yes, I can" attitude is instilled in each student. Instructors are nationally certified and have trained under Conway. They strive to help all ages achieve their best in a positive environment. Aggressive behavior or misuse of Taekwondo is not allowed, inside or outside of the school. Students have fun while they learn, increase their fitness, meet new people, and, yes, each student learns self-defense skills.

As a member of Taekwondo United, Ridgeland Taekwondo emphasizes self-discipline, courtesy and teamwork in a fun environment. Conway invites interested persons to call or visit the studio. Complementary classes are offered and encouraged.

Ridgeland Adds CNG-Fueled Vehicles to Public Works Fleet

Published by NGV Solutions



Public Works Director Mike McCollum is pictured here with one of the department's new compressed natural gas vehicles.

The city of Ridgeland has long had a reputation for being environmentally friendly, implementing a management plan to ensure stewardship of the environment and natural resources that can be enjoyed now and by future generations.

Utilizing alternative fuels in its fleet is one way the city is continuing its environmental management efforts. Mayor Gene McGee said, "We look at programs that are not only environmentally friendly, but also make sense for the city and help improve our residents' quality of life."

The city recently added compressed natural gas (CNG) fueled vehicles to its public works fleet. CNG is a cleaner burning fuel that reduces tail pipe emissions and extends the life of an engine. It also does not contain impurities such as sulfur or lead.

Public Works Director Mike McCollum said Ridgeland now has two CNG-fueled Ford F-550 trucks with plans to convert an F-150 next year. "The environmental benefits combined with fuel cost savings led to our decision to begin using alternative fuel vehicles," said McGee.

"We looked at converting other vehicles like the Mayor's, but didn't find it economically feasible," said McCollum. "Unless you're putting 15 to 20 thousand miles on a vehicle annually, then it's unlikely you'll recoup the conversion costs."

McCollum said that the CNG-fueled trucks see daily use by city work crews. "These trucks are used for everything from infrastructure repairs to road maintenance to landscaping. "Knowing that their engine emissions are less and we're saving on fuel costs – well that's great news for Ridgeland," said McGee.

The city utilized a Mississippi company, NGV Solutions, to install the vehicle conversion kits. Kent Meadows, vice president of NGV Solutions, said the company is dedicated to working with Mississippi cities and agencies to provide CNG technology and fuel savings. "The folks in Ridgeland are very knowledgeable about the benefits of using CNG fuels and technology," said Meadows. "CNG is the cleanest fuel being used today. Hopefully, other cities will follow suit and begin adding green technology to their vehicle fleets."

McCollum said future plans for Ridgeland could include installing a slow-fill CNG fueling station, if demand or usage makes it economically feasible.

4G+
Nationwide. Optimized. Maximized.

At C Spire, "good enough" is never good enough. We expect more from ourselves, and we're inspired by our customers to keep our network a step ahead.

To put our powerful 4G+ Network to work for you, visit your local C Spire store or visit cspire.com/4G+

 **c spire**

4G coverage not available in all locations. Learn more at cspire.com/4G+. C Spire™ is a trademark owned by Cellular South, Inc. Cellular South, Inc. and its affiliates provide products and services under the C Spire™, C Spire Wireless™ and C Spire Business Solutions™ brands. ©2014 C Spire. All rights reserved.

Alternate Travel Routes save Time for Holiday Shopping

When traffic gets heavy in Ridgeland during shopping hours this holiday season, you may want to try some alternate routes to get to your destinations. Try these tips below as suggested by Ridgeland Police Chief Randy Tyler.

To Northpark Mall from I-55/County Line Road:

If you are entering the City of Ridgeland via the I-55/County Line Road Exit heading to Northpark Mall, please continue east on County Line Road past Wheatley Street. Enter Northpark Mall at the entrance near The Everyday Gourmet, or better yet, continue east to Pear Orchard Road. There you can take a left at the County Line/Pear Orchard Intersection and continue down to the next traffic light at Pear Orchard Road and Northpark Drive. At that intersection you can take a left into Northpark Mall and miss the traffic congestion on Wheatley Street. With these routes you can still visit all of the retailers along County Line Road but miss the grid-lock of everyone trying to go the same way.



To Northpark Mall from Highway 51: Another route would be to utilize Hwy 51 to Lake Harbor Drive. All of the construction on Lake Harbour Drive has been completed and there are now no delays. Shoppers can take Lake Harbour east to Wheatley Street and turn right, if you are going to Wal-Mart. If your destination is Northpark Mall, continue east down Lake Harbour to Pear Orchard Road and take a right on Pear Orchard. Continue south to Northpark Drive and take another right into Northpark Mall. Lake Harbour Drive also has many retailers and restaurants along the way if you continue east to Old Canton Rd.

To Renaissance and the Township from I-55: If heading out to the Renaissance and the Township on Highland Colony Parkway via I-55, remember this: If you exit off north bound I-55 to Old Agency Road at Exit 105-B, you will have to cross over Old Agency Road to the East Frontage Road then travel

to Steed Road and take a left to get to Highland Colony Parkway. You cannot take a left onto Old Agency Rd from that exit. The suggested route is a little longer, but during times of heavy traffic, it brings you in the back way and you miss the traffic congestion on Old Agency Road. If you are coming in on I-55 north bound and want to exit on to Old Agency Road to get to the Renaissance and Highland Colony Parkway, be sure and exit at 105-C. You will loop back around over the interstate to Old Agency Road and go to the Parkway. If heading south bound on I-55, just take Exit 105-B and you can merge directly onto Old Agency Rd and turn onto Highland Colony Parkway for shopping at the Renaissance and the Township.

These alternate routes should keep you from spending valuable shopping time sitting in your car in traffic.

NORTH PARK MALL
A SIMON MALL

BELK DILLARD'S JCPENNEY H&M AEROPOSTALE THE LIMITED
VICTORIA'S SECRET EXPRESS CHICK-FIL-A BUCKLE

SIMON.COM

City of Ridgeland Christmas Parade

A Tropical Christmas

Saturday, December 6

at 2:00 p.m.

Olde Towne Ridgeland

Grand Marshal Erick Dampier

Former Player

Mississippi State University & NBA

Route will begin at Holmes Community College, turn southbound on Maple Street, turn westbound on Jackson Street, turn northbound on Sunnybrook Road. Awards will be given after the parade ends at Holmes Community College. Call 601-853-25011 for more information.



2014 Christmas Parade Sponsors



Recreation and Parks Directory

Office
601-853-2011

Fax
601-853-2015

E-mail
recre8@ridgelandms.org

Recreational Center
601-856-6876

Freedom Ridge Park
601-853-2023

Rental Information
601-853-2011

Hotline
601-853-2039

Youth Organizations

South Madison County Soccer Organization

SMCSO is a non-profit organization providing an opportunity for the youth of our area to participate in soccer. Visit www.smcso.com or call 601-898-1996 for more information.

Madison-Ridgeland Youth Club

MRYC is a community organization providing an opportunity for youth in our area to participate in baseball, softball, tackle football, cheerleading and basketball. Visit www.mryouthclub.com for more information.

Recreational Facilities

Freedom Ridge Park

235 West School Street - Freedom Ridge Park, a 50-acre athletic facility, is located on School Street just behind the Ridgeland Police Department. The park features four lighted adult regulation softball fields, four lighted regulation soccer fields, four picnic pavilions two playgrounds including a universal playground for use by individuals with physical disabilities or limitations, two concession/restroom buildings, a lighted walking trail and a maintenance facility.

Each of the four pavilions at Freedom Ridge Park is available at an hourly rate of \$15 for residents, and \$25 for non-residents. The security deposit, our "clean-up insurance," is \$100.

Ridgeland Tennis Center

201 McClellan Drive - The Ridgeland Tennis Center, a full-service public facility operated by tennis pros, is located at 201 McClellan Drive, off Highway 51. The center is home to 17 lighted, hard tennis courts, men's and women's locker rooms, a 2,000-square-foot covered porch for viewing, and a fully stocked tennis pro shop.

City Hall

304 Highway 51 - Ridgeland City Hall is home to four soccer fields during the soccer season. During baseball season, this property converts to three T-ball fields.

Ridgeland Recreational Center

137 Old Trace Park - The Ridgeland Recreational Center is housed in a two-story rustic lodge overlooking the Ross Barnett Reservoir. Daily activities for Superstar Seniors as well as nightly classes for all ages take place during the week in this facility.

Friendship Park

475 Lake Harbour Drive - Friendship Park is a multi-purpose neighborhood park facility. With a large lighted pavilion, a one-mile lighted walking/jogging trail, a fitness court, playground equipment, and restroom facilities, the park accommodates many and varying needs.

The pavilion is available for rental at an hourly rate of \$15 for residents, \$25 per hour for non-residents, with a security deposit of \$100. Park hours are 6:30 a.m. to 10 p.m.

Wolcott Park

349 McClellan Drive - Wolcott Park, a 40-acre athletic facility, is located on McClellan Drive, off Highway 51. It features seven lighted baseball/softball fields, a playground, 14 batting cages, two bull pens, two concession/restroom building and a maintenance facility.

Ridgeland Multiuse Trail

More than 14 miles of trails are available for public use in Ridgeland. Several miles of the trail travel through National Park Service property along the Natchez Trace Parkway. Parking for the trail is available at the intersection of Rice Road and Harbor Drive, at the Parkway Information Cabin, and on N.E. Madison Drive off W. Jackson Street. Water fountains, benches, and trash cans can be found along the trail. Please enjoy the trailhead facility that includes a covered pavilion with picnic tables, restrooms, bike repair station, and recycling container. A fitness station is conveniently located adjacent to the pavilion at the intersection of Rice Road and Harbor Drive.

SPECIAL EVENTS

Contact: Special Events Coordinator, Wendy Bourdin
Phone: 601-853-2011 Email: wendy.bourdin@ridgelandms.org

Ridgeland Christmas Parade

Get Tropical this Christmas! With such a playful and festive theme, your business, organization, neighborhood or church can have a lot of team-building fun designing bright, colorful and creative floats and parade entries. The parade brings smiles and laughter to spectators and is a great way to be involved in your community. Become a part of the Ridgeland Christmas Parade and make lasting memories!

There is no entry fee. Registration forms are available online at www.ridgelandms.org and at Ridgeland City Hall located at 304 Highway 51. Please register by Dec. 1. Keep Ridgeland Beautiful will be judging parade entries and publicly recognizing winners in each category. Whether you win or not, the parade is a great way to get your organization's name in front of lots of people!

The parade route begins and ends at the Holmes Community College Campus on Ridgeland Avenue. The parade travels through historic Olde Towne neighborhood, along Maple Avenue, turns west onto Jackson Street by the First United Methodist Church of Ridgeland and then turns onto Sunnybrook Road, past Olde Towne Middle School and Sunnybrook Children's Home. For spectators, there's plenty of parking on the side streets and church and school parking lots.

Start Time: 2 p.m.

Event Date: Saturday, Dec. 6

Location: Olde Towne Ridgeland



Christmas Decorating Contest

Nominate your friend, your neighbor (or yourself!) for the Christmas Decorating Contest! Keep Ridgeland Beautiful will view the exterior decorations of nominated businesses and residences and determine the winners. Prizes will be awarded to the homes that win in the following judging categories:

- Overall
- Door and Porch
- Judges' Choice
- Children's Choice

The top two winners in the business category will also receive prizes.

To nominate a home or business, please call the Recreation and Parks office at 601-853-2011. The judging date will take place Monday, Dec. 8.

PROGRAMS

Contact: Wendy Bourdin

Phone: 601-853-2011 Email: wendy.bourdin@ridgelandms.org

Dog Obedience

The Jackson Obedience Training Club (JOTC) will offer puppy, beginner and advanced dog obedience classes. The six-week class will teach obedience commands of heel, sit, down, stay, come and a few other commands that you will use in everyday life with your pet. The JOTC is a nonprofit organization that was established in 1969 and is licensed by the American Kennel Club.

Two sessions will be offered in the spring. Registration will be held for Session #1 Feb. 1-28, 2015. Classes for Session #1 will begin Tuesday, March 3. Session #2 registration will be held March 10 - May 1. Classes for Session #2 will begin Tuesday, May 5. Puppies must be 3 - 6 months old. Dogs for the beginner class must be at least 6 months of age or older. In order to be in the advanced class, your dog must have completed the beginner class. Proof of vaccination by a licensed vet is required.

Program Price: \$75

Registration: Session #1 Feb. 1-28
Session #2 March 10-May 1

Start Date: Session #1 March 3
Session # 2 May 5

Start Time: 7 p.m.

Day: Tuesday

Location: Ridgeland Recreational Center



ATHLETICS

Contact: Athletics Coordinator, John Sidney North

Phone: 601-853-2011 Email: john.north@ridgelandms.org

Youth Baseball & Softball

The Madison Ridgeland Youth Club will be holding baseball and softball registration for the upcoming spring. The program is designed for boys and girls ages 4 to 18. Girls must be 4 years old by Jan. 1, 2015 and boys must be 4 by May 1, 2015. This league is designed for all levels of participation and ability. With your registration fee, the participant will receive a hat, jersey and socks. You are also able to register online. For more information, visit www.mryouthclub.com.



Challenger League Softball

The City of Ridgeland Recreation and Parks Department will be offering Challenger League softball for the physically and mentally challenged. This is a chance to be a professional softball player for a season. The program also relies on buddies to assist the players. If you would like to be a part of the program, please contact Mandy Rodgers at 601-856-3623.

Program Price: None

Soccer

The South Madison County Soccer Organization will be holding spring soccer registration in December. This season runs from February through April. For more information, please call SMCSO at 601-898-1996 or visit www.smcsoc.com.



Adult Softball

The City of Ridgeland Recreation and Parks Department will be offering a men's open league (6 Homerun limit), a men's commercial league (3 Homerun limit), a men's church league. All games will be played at Freedom Ridge Park in Ridgeland. The leagues will be open to the first 24 teams in each division. ASA sanction rules will be in play for the leagues. We will offer 12 games for each league.

Registration will be held at Ridgeland City Hall, Monday – Friday, 8 a.m. – 5 p.m. For more information, contact John Sidney North at 601-853-2011.

Program Price: \$500

Registration: March 2 -13

SUPERSTAR SENIORS

Contact: Lynda McMahan Assink, Senior Adult Coordinator
Phone: 601-856-6876 Email: lynda.assink@ridgelandms.org

1060 E. County Line Road, Suite 22
Ridgeland, MS 39157
601.899.0038 ph
601.899.0047 fax

**BURGERS
& BLUES**

www.burgersblues.com

SPECIAL EVENTS

Senior Adult Christmas Luncheon

Mark your calendar to attend our annual Christmas Luncheon! RR&P Senior Adults and Broadmoor Baptist Church (J.O.Y. Group) will join together for this event. We will have a delicious lunch and great entertainment.

Our entertainment this year is Mary Margaret May. Mary Margaret is a Christian vocalist. She is very excited about her debut album, *In the Shadow of Thy Wing*, and hopes that it is well received, but most importantly, brings glory to God. She will be singing from her second album, *Upon a Winter Night*, a collection of Christmas favorites. The independent musical artist distributor, CD Baby, featured it as one of the Editor's Top Picks for holiday music this season. Ms. May currently teaches voice and beginner piano lessons at Fondren Guitars in Jackson.

Seating is limited. Tickets must be purchased before the event. You may buy your tickets at Ridgeland City Hall, Ridgeland Recreational Center and Broadmoor Baptist Church.

Program Price: \$7 (Tickets sold in advance)

Event Date: Thursday, Dec. 18

Time: 11:30 a.m.

Location: Broadmoor Baptist Church

Senior Adult Valentine's Banquet

Join us for a special Valentine's event for all area senior adults.

Our entertainment this year is Mark Robinson! Mark Robinson is one of the hottest comedy acts in the country. He is more than just a magician; he's a comedian, illusionist, juggler and master of ceremonies, making him one of the most versatile entertainers in the industry.

His hilarious stand-up comedy has garnered him rave reviews at comedy clubs and an invitation to open for Jeff Foxworthy. His amazing illusions have won him multiple awards from the magic community and numerous bookings with Harrah's Casino. His public speaking talents have been sought after by such companies as Johnson & Johnson, Coca-Cola and Aflac.

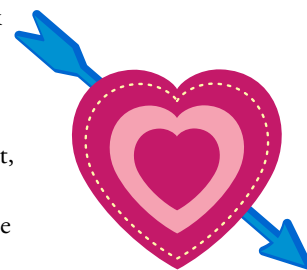
In Mark's show you will laugh and be amazed at the same time! Tickets will be on sale at Ridgeland City Hall and the Ridgeland Recreational Center. Tickets must be purchased before the event.

Program Price: \$5 (Tickets go on sale, Monday, Jan. 5)

Event Date: Monday, Feb. 9

Time: 5 p.m.

Location: Highlands Presbyterian Church, 1160 Highland Colony Parkway



TRIPS

Pink Blossoms – Beautiful Blooms and White Columns

Set for March 26-28, this is a 3-day trip to the Cherry Blossom Festival in Macon, Georgia, America's Cherry Blossom Capital. Blossoms and Mansions Trail Tour, Arts and Craft Center, and entertaining Festival Show are included. We will also see the elegant Sturdivant Hall. Cost: \$449/per person double occupancy (\$20 discount if you sign up early) 5 meals included.



MONTHLY PROGRAMS

All monthly programs will be held at the Ridgeland Recreational Center, 137 Old Trace Park, unless otherwise indicated below.

Ridgeland City Garden Club

The objective of our club is to provide education and to promote the love of gardening, landscape and floral design and to encourage civic beautification and environmental responsibility. If you are interested in gardening, horticulture, flower arranging, landscape design, the environment or related topics, then we are the club for you! If you are interested in attending any of our meetings or becoming a member, please send an email to Nanette Sullivan at sullinjs@gmail.com or call 601-856-6784. We would love to have you join us!

December 2, 2014 – Join us for an excursion to be remembered, “Christmas at the Historic Governor’s Mansion.” Meet at the Ridgeland Recreation Center at 9:15 a.m. to carpool. Maps and suggested parking will be available. Lunch is on your own at the Fairview Inn restaurant. (Entrees are under \$20.) Reservations must be made for the Mansion Tour and the Fairview Inn. Call Nanette Sullivan at 601-856-6784.

January 6, 2015 – The Ridgeland City Garden Club presents



Judy Thompson’s “Quilt Gardens of Indiana.” This is a power-point presentation featuring exquisite flower gardens replicating quilt patterns which are both traditional and newer designs. Located in Northern Indiana in a large Amish community, there are 20 gardens ranging in size from 800 sq. feet - 2,100 sq. feet. Guests are welcomed.

February 3, 2015 – “Fig Mania” session is all about planting and growing luscious Brown Turkey fig trees with new techniques for keeping the critters away. Donna Beliech with the Mississippi State Ext. Service will be presenting. This is the month to plant these delectable figs. Guests are welcomed.

Program Price: \$20 (yearly dues)

Event Dates: Dec. 2, Jan. 6, Feb. 3

Time: 11:30 a.m.

Day of Week: Tuesdays

Bridge

Bridge games are held the fourth Thursday of each month at the Ridgeland Recreational Center

overlooking the Reservoir. It provides a beautiful setting for an afternoon game. The player with the highest score wins first prize. Reservations are required four days in advance. Please call Lynda at 601-856-6876 to reserve your chair. Please arrive at 12:45 p.m. to receive your nametag. Game starts promptly at 1 p.m.

Program Price: \$1 each (for prize)

Event Dates: Jan. 22 and Feb. 26

Time: 1–4 p.m.

Day of Week: Thursday



Thread, Yarn, Crochet and Coffee

Bring your own needles, yarn, thread, and handmade project the second and fourth Mondays to the Ridgeland Recreational Center. Come and enjoy a relaxing afternoon of fellowship, coffee and working on your project. It will be a great time of “show and tell,” as you make your own masterpiece. Call or email Lynda for more information.

Program Price: Free

Event Dates: Dec. 8 and 22, Jan. 12 and 26, Feb. 23

Time: 1:30–3 p.m.

Day of Week: Monday



WEEKLY PROGRAMS

All weekly programs will be held at the Ridgeland Recreational Center, 137 Old Trace Park, unless otherwise indicated below.

Agape Men's Coffee Group

Begin your day by joining a group of men that meet every Wednesday morning. Enjoy coffee, lively conversation, and the opportunity to meet new friends. Call Lynda at 601-8566-876 for more information.

Time: 9:30 a.m.
Day: Wednesday

Line Dancing

Learn the dance steps that are popular everywhere! In this class, you'll discover a variety of line dances. It's great fun, good exercise, and you don't need a partner. Darlene Epple is the instructor for the class. Darlene has been a member of MCWDA (Mississippi Country Western Dance Association) since 1995. She has taught at birthday parties, church socials and office events. Darlene's motto is "Line Dancers don't make mistakes, they make variations." As long as you are on the dance floor, having fun, with a smile on your face, that's all that matters. Call or email Lynda for more information.

Program Price: \$40/month or \$10/week
Times: Beginners Class, 6-7 p.m.
Advanced Class, 7-8 p.m.
Day: Monday



Men's Bible Study

Men's Bible Study meets every Tuesday at the Ridgeland Recreational Center. This is a nondenominational Bible study for men only. Enjoy an in-depth study of God's Word and interesting discussion. Bob Shirley is your teacher. Call Earl Beck at 601-856-4252 or 601-668-2322 for more information.

Time: 9-10:30 a.m.
Day: Tuesday

Painting Pals

Is it hard for you to paint and/or draw at home? Bring your own supplies and enjoy painting at our Ridgeland Recreational Center overlooking the Reservoir. It's an ideal setting to paint or draw! Call or email Lynda for more information.

Program Price: No cost
Time: 1:30-3:30 p.m.
Day: Tuesday



Restoration & Relaxation (Gentle) Yoga

This is great class for those who are beginning an exercise class or rehabbing from an injury. Offered at a slow pace, this class will focus on the basics of yoga, breath work and gentle movements. A sense of well-being will come from breathing and gentle yoga stretches. This class will help you let go of the everyday stresses of life. Always consult with your physician before beginning any exercise program. For more information and to register, call or email Lynda.

Program Price: \$30 for 6 classes or \$8/class
Time: 11 a.m. – 11:30 a.m.
Days: Mondays and Fridays

Yoga for Flexibility, Fitness and Fun

Lisa Newman will guide you through gentle stretching and strengthening exercises for your whole body. This class is for those who have had some experience with yoga. Standing poses will be introduced as well as strength poses. Always consult with your physician before beginning any exercise program. For more information, call or email Lynda.

Yoga students may wish to join both yoga classes (gentle yoga at 11 a.m. and fitness yoga at 11:30) for only \$10.

Program Price: \$30 for 6 classes or \$8/class
Time: 11:30 a.m.–12 p.m.
Days: Mondays and Fridays

Working your Body Naturally A STRENGTH CLASS FOR SENIOR ADULTS

Ridgeland Recreation & Parks is offering a program designed to develop body strength, body awareness, and endurance for daily senior living. Learn to exercise with correct positioning that will improve posture and spinal alignment, increase bone density and strengthen your joints. Each session is a flowing and challenging, yet safe workout. All exercises are done without the use of heavy weights or machines. National Certified Pilates instructor, Jacy Miller (PMA-CPT), encourages each participant to work on his/her own unique physical needs and goals. Come to this groundbreaking and effective class!

Always consult your physician before beginning any exercise program.

Program Price: \$10/month
Times: 9:15 a.m. – 10:15 a.m.
Days: Tuesdays and Thursdays

SEASONAL PROGRAMS

Beginning Self-Defense Course for Senior Adults

Ridgeland Recreation & Parks is offering an 8-hour course on Beginning Self-Defense. This class will meet the first week in December, Monday, Dec. 1 through Thursday, Dec. 4, 1:30 – 3:30 p.m. Andrew Dillon will be the instructor. He is a 3rd degree Tae Kwon Do-Black Belt and has practiced and taught traditional martial arts and self-defense for 14 years. The goal of this course is to assist you in achieving personal safety. This course is light contact and practical. It will also help improve your strength, agility, flexibility and endurance. When it comes to crime and violence, the old saying “an ounce of prevention is worth a pound of cure” is not only true, but a potential life saver. The hardest part is doing your homework before you find yourself in a situation. Let’s stay safe for the holidays by registering for this class. Call Lynda at 601-856-6876 or email Lynda.assink@ridgelandms.org for more information. The cost is \$40. Participants who have previously taken this course may attend at no charge.

Registration: Now until Monday, Dec. 1

Event Dates: Monday – Thursday, Dec. 1 – 4

Time: 1:30 – 3:30 p.m.

Days: Monday - Thursday

Balance and Fall-Proof your Life

Are you ready to improve your balance and be as healthy as you can be? This is a 6- week exercise program that progresses through a set of balance training activities.

Your muscles have lost some mass and your joints maybe stiff, but you can do slow, controlled, low intensity movement. If you have a history of falling, now is the perfect time to exercise and regain your balance and control.

Sign up today for this class in the latest in fall prevention, balance exercises and total body strengthening. Always consult your physician before beginning any exercise program. Register for class by calling or emailing Lynda.

Registration: Now until Jan. 21

Event Dates: Classes begin Jan. 21

Program Price: \$30 for six week course or \$8/class

Time: 11 a.m. – 11:30 p.m.

Day: Wednesdays



Tai-Chi Fusion on the Reservoir

Tai Chi is an ancient practice proven to reduce pain and improve your mental and physical well-being. Tai-Chi is safe, easy to learn, and suitable for every fitness level. A few of the benefits are: increased flexibility and reduced risk of injury, focused breathing and concentration, improvement of mind-body connection, greater strength and stamina, better balance and stability, improved posture, stress reduction and much more. Always consult your physician before beginning any exercise program. Registration is required by calling or emailing Lynda.

Registration: Now until Jan. 21

Event Dates: Classes begin Jan. 21

Program Price: \$30 for six week course or \$8/class

Time: 11:30 a.m. – 12 p.m.

Day: Wednesday

TENNIS

Ridgeland Tennis Center

201-A McClellan Drive

Phone: 601-853-1115

Directors: Cheryl Harris and Susan Toler



Girls 16 Nationals Tournament

Feb. 14-16

Lessons

Six teaching pros are available for private and semi-private lessons at the Ridgeland Tennis Center. Call 601-853-1115 to schedule lessons.

Junior Drills for ages 11-18 are led by instructor Robbie Creveling. Call him directly at 601-316-5364 for pricing and schedules.

Title VI Policy Statement

The City of Ridgeland, under Title VI of the Civil Rights Act of 1964 and related statutes, ensures that no persons in the City of Ridgeland shall, on the grounds of race, color, sex or national origin, be excluded from participation in, be denied the benefits of, or be otherwise subjected to discrimination under any programs or activity it administers. Any person who believes he or she has been discriminated against should contact:

Paula W. Tierce, Title VI Coordinator

City of Ridgeland

304 Highway 51 • P.O. Box 217

Ridgeland, MS 39158

Phone: 601-856-7113 • Fax: 601-856-7819

paula.tierce@ridgelandms.org



ANN SMITH ELEMENTARY

Grades K-2 • 306 S. Pear Orchard Road
601-856-6621 • www.madison-schools.com/ase

Sowing the seeds of creativity through 'Great Artist' program

Rhonda Green has more than 800 “grandchildren.” Six of those grandchildren are actually the sons and daughters of her own three children, and the rest are the kindergarten through second grade students at Ann Smith Elementary. This year Green returned to teaching full time after retiring so that she could bring an art program to Ann Smith.

“I am a grandmother and I like to treat the students at Ann Smith like my grandchildren,” Green explained. “My grandchildren, ages 3 to 13, all have their own special plant at my house that they get to watch grow when they visit. I do the same thing with the children here. Each class has planted their own seed and they get to watch their plant’s progress each week when they come to art.”

In addition to learning about and drawing nature in art class, the children have been studying the works of famous artists through an elementary school curriculum called the “Great Artist Program.” Each month has a theme and corresponding project. In October, the students learned about Dutch artist Vincent Van Gogh. Green began the unit by taking the classes outside and talking to them about stars. She made each student a little star to keep, and displayed a print of Van Gogh’s *Starry Night* on an easel, all lit up in Christmas lights.

“I let them help me decide on the kind of paper and the medium and they created their own *Starry Night*. The kindergarteners used finger paints, crayons and construction paper; the first graders used pastel chalk, and the second graders used paint,” Green said. In September the children learned about Andy Warhol. November’s focus was Georgia O’Keefe. “Many of these children have no idea who these artists are, so they learn about them while exploring their own creativity.”

Green has a print of the Leonardo da Vinci’s *Mona Lisa* prominently displayed in her classroom. It’s a painting that has awed art lovers for 500 years—including the students at Ann Smith. “Some of them asked me if the *Mona Lisa* was a picture of God. Others have asked if it was ‘God’s sister.’”

Green considers herself more of an art “encourager” than teacher. All of the children have success in her classroom. “I love watching the progress that they’re making. Some of these children have never held a real paintbrush and used a real easel. There is no



After learning about Vincent Van Gogh, Ann Smith students created their own versions of *Starry Night*. Art teacher Rhonda Green has been teaching the children about great artists while encouraging them to explore their own creativity.

negative here. There are rules that they must follow, but they all feel very free in my classroom. In here, they just bloom.”

At any given time Green has 400 pictures drying in her classroom. “I get to see more than 800 smiles a week. I love coming to work every single day.”

Ann Smith takes a school-wide approach to arts integration, incorporating art throughout the school day in all classes. Green’s class focuses on guided art lessons, while the classroom teachers integrate the arts to help students learn the core subjects.

“I am very proud that ASE is one of the few schools in Mississippi that has an art program for all of its students,” said Dr. Melissa Phillely, principal. “In Mrs. Green’s art class and in the regular classroom settings the kids are allowed to make decisions, problem solve and take risks with their work. We believe these opportunities will have a lasting effect on students’ lives inside and outside the classroom. Plus, it’s fun! The kids love it. They are excited about their pieces and are proud of what they make.”

Weekly Spanish lessons are *fantastica!*

When the second graders at Ann Smith see teaching assistant and native Puerto Rican Nestor Toro in the hall, they don't say "hi," they say "*hola!*" Toro has been giving each second grade class a 25-minute Spanish lesson every week. They are learning basic phrases and common greetings, as well as the corresponding Spanish words for their weekly vocabulary curriculum.

"I see the Spanish lessons as a way to reinforce their curriculum. When they were doing lessons on geography and learning about the continents and North, South, East and West, they learned those words in Spanish, too," Toro explained. "Now they are learning about the human body in class—the lungs, the heart—so they are learning body parts in Spanish as well."

Toro incorporates games, riddles and songs into the teaching to help make the lessons fun and interactive. The students are also learning the Spanish alphabet and about different Latino customs and communities. The native Spanish speakers at Ann Smith are enjoying the lessons, too. "Even though they speak Spanish at home, they often are unfamiliar with the grammar rules and proper spellings of those words," said Toro.

"They are very excited!" said Dr. Melissa Phillely, principal. "It is a new learning experience for them and they are starting to recognize how English and Spanish are similar languages. They are also beginning to use critical thinking skills to figure out what Spanish words mean based on their relationship to the English words they know."

Second-grader Holli Grace Italiano said she loves Spanish class. Her favorite lesson was when they learned the song about saying goodbye. Second-grade teacher Suzanne Pierce said that the lessons are building an appreciation of other cultures and providing a background for the multicultural literature they read in class.



For many Ann Smith second graders, Nestor Toro's weekly Spanish lessons are the highlight of their week.

Parents, teachers, community join students in parade up Pear Orchard

More than 300 students, parents, city leaders and community members joined Ann Smith's fourth annual Walk to School Day parade Oct. 8. Ann Smith was one of thousands of schools in more than 40 countries celebrating International Walk to School Day, promoting pedestrian safety, environmentally friendly forms of transportation and health and fitness.

"Many of our students walk to and from school every day thanks to Ann Smith's convenient location. Our school connects to the multi-use trail and is right around the corner from several neighborhoods and apartment complexes in Ridgeland," said DeVaughan Smith, Walk to School Day organizer. "Walking to school is great exercise and a wonderful way to get to know your neighborhood and community."

Notable parade participants included Mayor Gene McGee, Representative Rita Martinson, Alderman-At-Large D.I. Smith, Madison County school board member Philip Huskey, Edith Mitchell, Dr. Jennifer Fillingim, Ridgeland High School cheerleaders and band members, Rochelle Culp of the Mississippi Tobacco-Free Coalition and members of the Ridgeland Police Department.



Christian Leal and Officer Ricky Bracey exchange a smile as they arrive at the school.

Kindergarten Open House: *Expectations High for Class of 2028*

The year 2028 sounds like the setting of a sci-fi thriller, but for upcoming kindergarteners, it's the year they will cross the stage and receive their high school diploma. It all begins with that first day of kindergarten, so if you have a little one taking that first step in the fall, come to the Kindergarten Open House Friday, Jan. 30, at 8:30 a.m., to learn about the educational opportunities at Ann Smith. You'll be able to take a tour of the school, observe a kindergarten classroom, meet the principal and other faculty, and talk to Titan parents who have been in your shoes.

Ann Smith, Highland kids 'Get Ready to Run'

Ann Smith and Highland Elementary students have been learning about running, physical fitness and making healthy lifestyle choices through the Blue Cross & Blue Shield of Mississippi Get Ready to Run Program. With fun games and activities in their P.E. classes, they are building endurance, setting and accomplishing long-term fitness goals and enhancing their self-esteem.

As part of the program, Ann Smith and Highland students will have the opportunity to participate in the Mississippi Blues Marathon Kids' One-Mile Fun Run in downtown Jackson Saturday, Jan. 10, at no cost. Students who run on race day can also help earn award money to support their school's P.E. program.



Highland Elementary student René MelgaRejo breaks away from the pack. He and his classmates are training for the Mississippi Blues Marathon Kids' One-Mile Fun Run in January.

The Get Ready to Run lessons and activities were developed by health and wellness experts at Blue Cross & Blue Shield of Mississippi in cooperation with the Mississippi Department of Education and fully support the Mississippi Framework for Physical Education and the National Association for Sport and Physical Education Standards.

"The kids have really embraced the running lessons," said Highland P.E. teacher Jeff Cole. "They've learned how to pace themselves, and the students who didn't like to run before, seem to like it a lot more now."

Of course, running isn't completely new to most Ridgeland students. Many have been participating in the Titan Trot 5K and One-Mile Fun Run each spring, a community race sponsored by one or more of the Parent Teacher Organizations in Ridgeland. With all they have learned and accomplished through the Get Ready to Run Program, they'll be even more prepared for this year's Titan Trot on Saturday, March 28.



HIGHLAND ELEMENTARY

Grades 3 - 5 • 330 Brame Road

601-853-8103 • www.madison-schools.com/hes

Fifth-Grade Novel Study Sparks Creativity and Critical Thinking

All Highland Elementary fifth-graders completed a grade-wide novel study in the fall featuring C.S. Lewis' classic fantasy novel, *The Lion, the Witch and the Wardrobe*. The language arts teachers at Highland chose the book since it's on the exemplars list of books by the Mississippi Department of Education's Office of Curriculum and Instruction, and also due to the novel's rich vocabulary, detailed settings and fantastically relatable characters.

"We were planning to focus on narrative text and fantasy writing for the month of October and were looking for a great book to use as our novel study," said Megan Meyers, a fifth-grade language arts teacher. "*The Lion, the Witch, and the Wardrobe* has a Lexile reading level of 940, which is right in the middle range of where fifth-graders should be. We thought it would be nice for all students to share in studying the same novel at the same time in order to encourage discussion among all students. We also thought it would be a great book to add to any home library."

To get students excited about the five-week study, students first learned about C.S. Lewis and World War II, the time period of the book. Each student created a "Fantastic Folder Narnia Lapbook," which included a variety of literature activities. The culmination of the unit was the completion of this folder, which served as two test grades.

The unit implemented Common Core State Standards for fifth-grade reading/literature such as determining the novel's theme, comparing and contrasting story elements, determining the meaning of words and phrases including figurative language, and describing the author's point of view.

"The content in *The Lion, the Witch and the Wardrobe* is rich enough and deep enough that it can't help but spark critical thinking and discussion from students," explained Marla Freeman, a fifth-grade language arts teacher and fifth-grade chair. "It was exciting to witness the conversations our students had through the use of reciprocal reading strategies (predict, clarify, question, summarize) in groups as well as in casual conversations.

"Our ultimate goal in choosing this particular study was for our students to become more independent readers. We hope that they loved this book and will want to read the entire *Chronicles of Narnia* series."



Fifth-grade teacher Marla Freeman reviews Zoe Robertson's daily writing assignment in her "Fantastic Folder Narnia Lapbook."

HIGHLAND STUDENTS REAP REWARDS FROM CLASSROOM GRANTS

As part of the Madison County School District, Highland Elementary is blessed with an abundance of resources, thanks to the City of Ridgeland's strong tax base. However, when teachers need more than their available resources to enhance their classrooms, they apply for grants to help fund various projects designed to enrich learning environments for students.

Three Highland teachers recently applied for and won grants. Megan Meyers, a fifth-grade language arts teacher, submitted a project to DonorsChoose.org, an online charity that provides a space for public school educators to find funding for grants through individuals and corporations. Meyers' grant for a listening center in her classroom included a set of four iPod Shuffles, eight pairs of headphones, several headphone splitters and a charging station for all iPods. Several of Meyers' friends, family members and her students' parents donated money to fund the project. The rest of the funding came from generous donations from The Bill and Melinda Gates Foundation, which provided half of the funding, as well as The Barksdale Foundation.

"When I got the notification that my project had been fully funded, I was so excited and overwhelmed by the generosity," said Meyers. "Allowing my students to listen to books can increase their reading comprehension. It also provides support for students who may really want to read a book that looks interesting, but the book level is too high for them. They can follow along in the book as the narrator models correct fluency."

Music teacher Monica Hutchison received a Junior Auxiliary of Madison County Crowning Achievements Mini-Grant to provide her students with hands-on learning through drums. For her project called "Drumming Highland to Success," Hutchison was able to apply for up to \$500, which she will use to purchase 10 hand drums, eight sound spheres and 10 sets of mallets. Combined with the drums the school currently has, the additional equipment will allow all children to have their hands on a drum at the same time during their music class.

"Research has shown that drumming can have a positive impact on the students not just musically, but academically and behaviorally," said Hutchison. "It has also been proven repeatedly that students in schools with arts-focused curriculums report significantly more positive perceptions about their academic abilities than students in comparison groups."

To promote innovation and enhancement in math, fifth-grade teacher Melissa Levy applied for and received a Nissan/BankPlus mini-grant for \$1,500 used to purchase "Classroom Jeopardy," a game to encourage hands-on learning.



Pictured are students in Megan Meyers' language arts class using her new listening center (from left) Omari Lindsey, Kimberly Arellano, Kailyn Allen, Ethan Pixler, Charlie Barnes and Daniella Cruz.

"Classroom Jeopardy' reinforces concepts and skills in math," explained Levy. "It will motivate and challenge students in a fun, exciting way."

Although the grant application process can be lengthy and time-consuming for teachers, the rewards are far-reaching for the students at Highland. "The additional funding provides resources to enhance students' creativity, meet the challenges of increased standards and prepare them for a successful future," said Principal Paula Tharp. "We're so fortunate to have such dedicated teachers and a supportive community coming together to positively impact our students."



BUFKIN MECHANICAL, INC.

P.O. Box 2604
Madison, MS 39130-2604
(601) 898-8100

Future Neurosurgeons

The fourth- and fifth-grade Pathways gifted classes have been learning about the human brain and how it works. As part of this unit, Allen Richert, a psychiatrist at the University of Mississippi Medical Center and an HES parent, spoke to the Pathways students about the brain and answered questions. To conclude the unit, students got the opportunity to dissect a sheep brain.



A couple of Ellen Litton's fourth-grade Pathways students identify the parts of a sheep brain for third-graders in Mena Burnett's class.



Pictured are (from left, front) Jennifer Wright, Reenie Boswell, Trinity Kiser; (back) Jonathan Galeana, Nathan Cesena, Harsika Dillibabu, Lauren Abadie and Unique Funchess.

CREATE
NEW
TRADITIONS

BlueCross BlueShield
of Mississippi

It's good to be Blue.

www.bcbsms.com

Blue Cross & Blue Shield of Mississippi, A Mutual Insurance Company is an independent member of the Blue Cross and Blue Shield Association.
® Registered Marks of the Blue Cross and Blue Shield Association, an Association of Independent Blue Cross and Blue Shield Plans.



OLDE TOWNE MIDDLE SCHOOL

Grades 6–8 • 210 Sunnybrook Rd.
601-898-8730 • www.madison-schools.com/otm

Olde Towne Middle School Holiday Concerts Brighten the Season

The community is invited to Olde Towne Middle School's winter choral and band concerts. These performances will be sure to get you into the spirit of the holidays. There is no cost to attend these wonderful cultural events. It is awe-inspiring to see middle-school students excelling in the arts.

Concert Schedule

December 2

Olde Towne Middle School Band Concert, 7 p.m. Ridgeland High School auditorium

December 4

Sixth Grade Choir Holiday Concert, 6:30 p.m. First Ridgeland Baptist Church

December 9

Seventh and Eighth Grade Choirs 6:30 p.m. First Ridgeland Baptist Church

Every Titan has their Niche



Olde Towne Middle School seventh graders gathered together to show that every Titan has their niche. From books and music to sports and technology club, OTMS students find many ways to participate in school life. Front row (left to right): Maddy Berry, Mamie Ainsworth, Array Huskey. Second row (l to r): Claire Richert, Riley Bennett. Third row (l to r): Zoe Cole, Jeb Bailey, Ashley Baldwin, Calvin Williams, Ford Sterling. Fourth row (l to r): Mustafa Alomary, Sony Severin. Fifth row: Connor Jackson, Jamya Bostic, Mackenzie Holloway, Camille Kelly, Charity Brock.

Olde Towne Middle Science Club

Last spring, OTMS Science Club designed a series of experiments carried to an altitude of 66,000 feet by the annual near-space balloon launch, a collaboration between this club and the top-ranked Technology Student Association radio and technology club. Experimentation and data analysis ensues this fall, as OTMS student-scientists grow the seeds that went to near space last year, looking for mutations that might come from increased cosmic radiation in the upper atmosphere. The group also collected micrometeoroids from the flight; they are undergoing analysis.



Science Club Elite mentor and OTMS science teacher Bobby Robinson ensured student experiments were readied for their ascent via the near-space balloon last spring. This year science club students are analyzing many of the experiments sent up with the balloon, in the disciplines such as botany, genetics, biochemistry and geology.

FRENCH TEACHER PROMOTES PENMANSHIP

Ridgeland High's French teacher, Madame Linda Hegwood, has the elegance of a Parisian, although she was raised in Lexington, Miss. She is beloved by students and enjoys that they take their studies seriously. Students are required to take two years of foreign language to graduate, but many opt for three or four years of French because they enjoy her class so much.

Hegwood is also the faculty advisor of the Ridgeland High French club. Students host a French breakfast meeting once a month, bringing in authentic foods like macarons and Pain de Noël Buche to share.

Integrating active learning, vocabulary lessons, writing and cultural experiences ensures the language is mastered; and her long career and close observation of her students brought something to her attention.

"I have taught high school French for 30 years and began to notice when I gave an assignment, the tap, tap of pencils on paper sounded like typing. I told them to write in cursive and they said, "No one ever taught us how!"

Hegwood learned that indeed, it's now considered too time-consuming to teach these soon-to-go-out-into-the-world students this art.

"What," she asked, "are you to do when you want to write a letter to your grandmother or maybe a note of appreciation for an interview to a potential employer?"

"Certainly, the use of electronic means for communicating is essential and in many situations, brevity and speed are paramount. But why can't we have it all?"

Research shows that handwriting correlates with important brain functions, such as language learning, reading development and memory. Many North American educators now realize we were wrong to neglect the development of this skill.

A 2012 Conference in Washington featured handwriting advocates from the fields of neuroscience, research and education. To have "handwriting advocates" and "neuroscientists" in the same topic is strong evidence of handwriting's importance.

The National Association of State Boards of Education has compiled evidence that learning cursive enhances cognitive skills. Is it a coincidence that cognitive thinking skills have declined as cursive writing has been abandoned? I think not.

As a teacher, imagine how rewarding it is to hear comments like "I have been practicing my cursive and it's getting better" or "should we do this assignment in cursive?" or "the owner was impressed I filled out my job application in cursive!"

Hegwood honors the profession of teaching. Over 2300 years ago, Aristotle denoted, "Those who educate children well are to be honored; for they give them the art of living well." Her students will go out into the world especially equipped to do so.



French students enhance cognitive skills by writing their assignments in cursive



RIDGELAND HIGH SCHOOL

Grades 9-12 • 586 Sunnybrook Road

601.898.5023

www.madison-schools.com/rhs

Randy Townsend Receives National Honor

The National Society of High School Scholars selected Randy Townsend, Ridgeland High School

Sophomore to become a member of the esteemed organization. The Society recognizes top scholars who have demonstrated outstanding leadership,

scholarship and community commitment. Membership in the Society entitles qualified students to enjoy scholarship opportunities, academic competitions, member-only resources and programs.



Randy is the son of Danny and Lisa Townsend. He is a member of the following groups and clubs at RHS: Mu Alpha Theta, Spanish Honor Society, Fellowship of Christian Athletes, Technology Student Association, Robotix, National Honor Society and football and baseball teams. He is a member of KeyPointe Church Youth Group. His goal is to attend Clemson University and major in Engineering.

RIDGELAND HIGH SCHOOL SOCCER

HOME SCHEDULE

Dec. 9	Vicksburg	5:30 p.m. (g)/7 p.m. (b)
Dec. 11	Clinton (JV)	5 p.m. (g) / 6:30 p.m. (b)
Dec. 12	Florence	5:30 p.m. (g) / 7 p.m. (b)
Dec. 13	Terry	11:30 a.m. (g) / 1 p.m. (b)
Dec. 19-20	Brooke Welch Tourney @ Freedom Ridge	TBA
Jan. 3	Kosciusko / Brandon	TBA
Jan. 10	Saltillo	2 p.m. (g) / 4 p.m. (b)
Jan. 15	Callaway	5:30 p.m. (g) / 7 p.m. (b)
Jan. 22	Lanier	5:30 p.m. (g) / 7 p.m. (b)

Playoffs: Jan. 27, Jan. 31, Feb. 3, Feb. 6-7

Head Coach: Matt Woods

(g) = girls (b) = boys

Ridgeland High School Choirs to present Festival of Carols



Member of RHS Singers gather following the Fall Preview concert. RHS Singers is the most advanced choir at Ridgeland High School, consisting of 20 students selected through audition. Pictured from left, Michael Ziegelbauer, Heather Van Horn, Andre Vincent, Aviya Castilla, Caleb Salers

The choirs of Ridgeland High School under the direction of Miss Rachel Upton will present their Festival of Carols Dec. 11 at 7 p.m. in the Ridgeland High School Auditorium. The concert is free and the community is invited to attend. Holiday selections will be performed by the Women's Choir, Concert Choir and the RHS Singers.

Festival of Carols will conclude with a mini-musical medley of the Broadway sensation, Les Miserables. This 27 minute showcase will feature set pieces, choreography and costumes that will bring life to the Les Miserables experience.

Miss Upton is in her second year as choir director at Ridgeland High School. Her choral music experience includes local, regional, national, and international performances with The Southern Chorale, The Southern Belletones, The Concert Choir, Meistersingers, Hattiesburg Choral Union and USM Chamber Choir. She graduated from the University of Southern Mississippi School of Music with a Bachelor's Degree in Choral Music Education (2011) and a Master's Degree of Music Education (2012).

Miss Upton requires excellence in her classroom and that is reflected in the school's choir concerts. The varied repertoire and superior performance of the choirs are sure to please audience members.



Jackson Native To Instruct New Surgical Tech Program At HCC Ridgeland Campus

Holmes Community College recently hired Travia “Shea” Coleman of Jackson to instruct the new surgical technology program for the Ridgeland Campus. She will give lectures and lead clinical labs in anatomy and physiology, aseptic technique, medical terminology, microbiology, operative procedures, patient care, pharmacology, medical/legal aspects, and technological sciences.

Prior to coming to HCC, Coleman worked as a surgical tech in the cardiac catheterization lab at St. Dominic Hospital in Jackson for two years. She obtained her Bachelor of Science in clinical exercise physiology at Mississippi State University before earning the associate of applied science degree in surgical technology from Hinds Community College.

“I’ve always wanted to teach, so I’m so excited about this opportunity,” Coleman said. “I look forward to working with the students and preparing them for careers in this rapidly growing field. The need for surgical techs is increasing all the time and they are now an important part of surgical teams in hospitals, clinics and labs. Duties that once belonged only to nurses are now being assigned to surgical techs.”

Surgical techs work with surgeons, anesthesiologists and certified registered nurse anesthetists, registered nurses, and other surgical personnel in delivering patient care and assuming appropriate responsibilities before, during and after surgery. The goal of the surgical technology program at HCC is to prepare students for employment as competent, knowledgeable, surgical technologists who will become valuable contributing members of the health care team.

“The field of surgical technology is on the rise, and I’m thrilled to be a part of the inaugural program on Holmes’ Ridgeland Campus,” Coleman said.

The surgical technology program at Holmes has a limited number of slots available each year. The Ridgeland program accepts 10 students per year, and is already full for 2014-2015.



Pictured is Travia “Shea” Coleman of Jackson, who was recently hired as instructor for the new surgical technology program on Holmes Community College’s Ridgeland Campus.

The program is also offered at Holmes’ Grenada Center. Interested students should check out www.holmescc.edu to watch for application opening dates for the next cohort slated to begin August 2015.

For more information about the program, contact Coleman at tcoleman@holmescc.edu.

HOLMES COMMUNITY COLLEGE

412 W. Ridgeland Avenue • 601-856-5400
www.holmescc.edu



Holmes Community College offers workforce training at the McGowan Center located at the Ridgeland campus. For a listing of current classes, go to <http://www.holmescc.edu/workforce/classes/index.aspx>.

Johnson Named Rookie Business Educator of the Year

NaTunya Johnson of Holmes Community College was named 2013-2014 Rookie Educator of the Year during the Mississippi Business Education Association (MBEA) Conference held in Gulfport on September 19. She joined the Ridgeland Campus



of Holmes in Fall 2010. She currently serves as a fulltime Business and Office Technology instructor, department chair and a sponsor for Phi Beta Lambda business society. Johnson received her bachelor of business administration and marketing from Mississippi State University and her MBA from Delta State University. She resides in Ridgeland with her husband, Michael and their 11-year-old daughter, Nadya.

English Instructor Stacey Coulter Named 2014 Mississippi Humanities Council Teacher of the Year

Holmes Community College English Instructor and 2014 Mississippi Humanities Council

Teacher of the Year Stacey Coulter will be recognized at the 2015 Public Humanities Awards Reception in February at the



Old Capitol Museum in Jackson.

A native of Prentiss, Coulter obtained a B.A. in English from Mississippi College and a M.A. in English from Wake Forest University, where her master's thesis focused on the poetry of W. B. Yeats. She has also completed coursework for her Ph.D. in English at Claremont Graduate University in Claremont, Cal. She plans to complete her dissertation and graduate in spring 2015. Coulter's major area of study was 20th century British literature with a particular interest in post-colonial and feminist theory. During her time at Holmes, Coulter has taught developmental English courses, English Composition I and II, and British Literature.

"I enjoy the challenge of teaching writing classes, as I look for new ways to engage students in the process of improving their writing and research skills," Coulter said. "I also value my position at the writing center, where I have the opportunity to train student tutors and work with student writers in a one-on-one setting."

Coulter has been a faculty member at Holmes since 2006.



The Alpha Lambda Sigma Chapter of Phi Theta Kappa at Holmes Community College in Ridgeland inducted 11 new members into the honor society for two-year college students on Oct. 27. They are: (seated, left to right) Tawnie Wright of Madison County; Crosby Hart of Yazoo County; Chasity McCree of Yazoo County; Avery Huff of Madison County; Rachel Agnew of Madison County; Patricia Castenada Gunn of Madison County; Shiquita Haralson of Hinds County; (standing, left to right) Dr. Don Burnham, vice president of Holmes Ridgeland Campus; Neftali Palma of Madison County; Joe Gibson of Hinds County; Ashley Brooks of Rankin County; Michal McDaniel of Rankin County, and Dr. Jim Haffey, president of Holmes.



The induction ceremony of 11 new members into the Alpha Lambda Sigma Chapter of Phi Theta Kappa at Holmes Community College in Ridgeland was led by six of the PTK officers and the four advisors. Pictured are: (seated, left to right) Rachael Packer, vice president of scholarship; Paulette Vargas, president; Christina Bracey, recording secretary; (standing, left to right) Antoine Gates, biological science instructor and faculty; Laura McMahon, psychology instructor and faculty; Emma Warren, vice president of outreach; Brad Simpson, vice president of hallmarks, Haley Sims, vice president of fellowship; Dr. Amy Wolgamott, speech instructor and, and Blair Booker, librarian and advisor.

Christ Covenant School Fall Into Fun Festival



A family friendly festival with something for all ages to enjoy.

Christ Covenant School held its 9th annual Fall Into Fun Festival on October 9th, 2014. This event is a fundraiser for Christ Covenant School and featured a petting zoo, silent auction and raffle, face painting, giant inflatables, a live DJ, a mechanical bull, laser tag, concessions by Chick Fil A, and more!



CHRIST COVENANT
SCHOOL

752 Pear Orchard Road
601-978-2272
www.christcovenantschool.net



St. Andrew's girls and boys swim teams earned the 2014 State Championship. The Saints girls have won three of the last four State Championships ('11, '13 and '14), and one State ('12). The boys have won two of the last three Championships ('12 and '14), with one State ('13).



ST. ANDREW'S
EPISCOPAL SCHOOL

ST. ANDREW'S
EPISCOPAL SCHOOL

North Campus—Grades 5–12
370 Old Agency Road
601-853-6000 • www.gosaints.org



THE VERITAS
SCHOOL

A Christ-Centered and Classical Education
1200 Highland Colony Parkway
601-713-1555 • www.theveritasschool.org

RIDGELAND PUBLIC LIBRARY



Madison County Library System
397 Highway 51 • Ridgeland, MS 39157
Telephone: 601-856-4536
Web address: www.mcls.ms

Hours:
Mon. – Thurs. 9 a.m. – 7 p.m.
Fri – Sat. 9 a.m. – 5 p.m.
Closed on Sunday

CHILDREN AND FAMILY PROGRAMS

Contact: Cindy Graves

email: cgraves@mcls.ms

WINTER PROGRAMS

Some snacks served at library programs may not be allergen-free. Please exercise parental guidance in allowing your child snacks provided at library programs. Thank you!

For more information, please check the library's online calendar at www.mcls.ms, or contact Cindy Graves by phone at 601-856-4536 or by email at cgraves@mcls.ms

Ridgeland Readers (ages 3-7 year olds)

Tuesdays: 4 -5 p.m.

Programs include stories, songs, flannel board activities, movement, and crafts.

- December: 2, 9
- No programs on Tuesday, December 16, 23, or December 30.
- January: 6, 13, 20, 27
- February: 3, 10, 17, 24

Baby Bookends (ages 0-2 year olds)

Wednesdays: 10:30 - 11 a.m.

Mother Goose on the Loose is an interactive program between children and their caregivers. Participants will sing rhymes, play musical instruments, read stories, and do flannel board and movement activities.

- December: 3, 10
- No programs on Wednesday, December 17, 24, or December 31.
- January: 7, 14, 21, 28
- February: 4, 11, 18, 25

Beary Berry Christmas Party (For the whole family)

Share cocoa and a story, and make themed holiday crafts while you wait to see Santa!

- Thursday, December 11, 5:30 – 6:30 p.m.

Cookie Party (students age 8+)

Decorate cookies to make your own signature design. Cook up some fun!

- Thursday, January 22, 4 -5 p.m.
- Register by January 15.

Crazy 8's Math Club (Pre-K/K-2/Gr. 3-5)

Join us for this after-school club that helps kids appreciate the math that is all around them. It's nothing like your usual math club!

Registration begins in November. Specific age group and time(s) to be announced later.

- Thursday, January 29, time TBA

FamFun Valentine Play-Dough Party (For the whole family)

Make Valentines with Play-Dough!

- Thursday, February 12, time TBA



Showing her Disney side and personalized mouse ears for our Disney theme story time.



Little ones get fancy too!



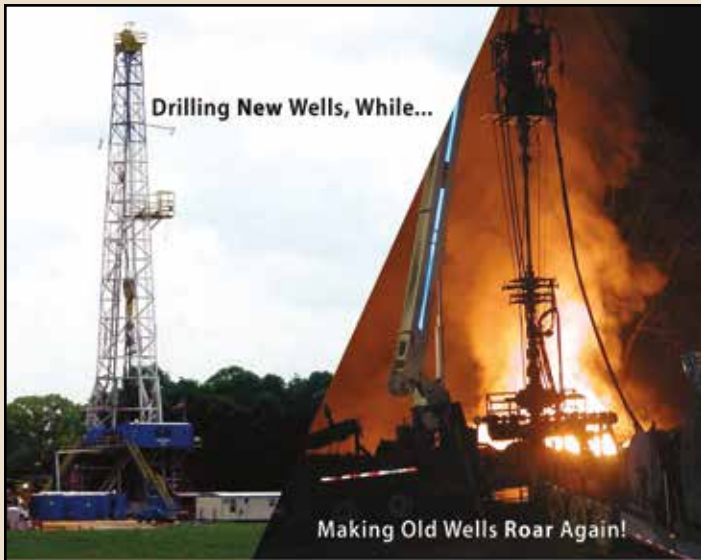
Fancy Friends



Mom and son enjoy the mix of old and new at Ridgeland's Retro Rewind FamFun event.



At left: Mrs. Cindy with some excited Highland Elementary 3rd graders.



Drilling New Wells, While...

Making Old Wells Roar Again!

TELLUS OPERATING GROUP, LLC

IS STRIVING TO MEET AMERICA'S ENERGY NEEDS, AND WE PROUDLY SALUTE ALL MISSISSIPPI ATHLETES FOR THEIR EFFORTS TOWARD DEVELOPING THE NATURAL ENERGY OF THIS GREAT STATE.



602 Crescent Place, Suite 100, Ridgeland, MS 39157 www.tellusoperating.com

Barksdale Cadillac

The All New 2015 ATS!

People You Trust, Automobiles You Love!

700 Adcock Dr., Ridgeland, MS 39157
601.948.5183 • barksdalecadillac.com



CITY OF RIDGELAND
CHAMBER OF
COMMERCE

754 S. Pear Orchard Rd.
Phone: 601-991-9996
www.ridgelandchamber.com

BUSINESS AFTER HOURS AND EVENTS

Tuesday, December 9
Mayor's Prayer Breakfast

Colonial Heights
Baptist Church
444 Northpark Drive
7:00 a.m. - Breakfast
7:30 a.m. - Program
*Tickets available from the
Chamber office.*

~

Thursday, January 15
TownePlace Suites

310 Southlake Avenue
5 - 7 p.m.

~

Monday, January 26
Annual Banquet

Hilton Jackson
1001 E. County Line Road

~

Thursday, February 19
Community Bank

751 Lake Harbour Drive
5 - 7 p.m.

Long-Time Billy Graham Associate to Keynote Ridgeland Chamber's Mayor's Prayer Breakfast

Dr. Thomas K. Phillips, Vice President of the Billy Graham Library in Charlotte, NC, will keynote the annual Mayor's Prayer Breakfast sponsored by the City of Ridgeland Chamber of Commerce, Tuesday, December 9.

Themed, "We Have Come to Worship Him", the breakfast will be held at Colonial Heights Baptist Church. The breakfast buffet begins at 7 a.m. and the program at 7:30 a.m. Tickets are \$12 each.

Dr. Phillips, who began his ministry with the Billy Graham Evangelistic Association (BGEA) in 1974, has served as Vice President of the Billy Graham Library since 2012.

A native of Corinth, MS, Dr. Phillips is a magna cum laude graduate of the University of Mississippi. He received his Doctor of Ministry and Master of Divinity degrees from Southern Baptist Theological Seminary in Louisville, KY.

Through his ministry with the BGEA, Dr. Phillips has served as Vice President of Crusades; Director of the Billy Graham Training Center at The Cove in Asheville, NC and as Senior Crusade Director.

Dr. Phillips is the author of five books: "Arise, Prescription for a Slumbering Church"; "Lifestyle Witnessing"; "Revival Signs: The Coming Spiritual Awakening"; "The World at Your Door" and "Ignite Your Passion", as well as editing "The Billy Graham Christian Worker's Handbook"; "Laws of Revival"; "Holiness"; "The Power of Cooperative Evangelism" and "The BGEA Christian Workers Bible".

"It is such an honor to be invited to come to Mississippi, my home state, to speak at the Ridgeland Chamber's Annual Mayor's Prayer Breakfast," Dr. Phillips said. "I eagerly anticipate my time with you and sharing from my years of experience with Billy Graham."

The Prayer Breakfast will include scripture readings from area pastors and clergy as well as special music from solo trumpeter Ridgeland resident Terry Winch, Director of Instrumental Music at Broadmoor Baptist Church in Madison.

Winch, who also is an arranger, composer, producer and conductor, arranged musical scores for over 75 albums, CD's, numerous commercials, films and television shows. As jazz trumpet soloist, Winch has performed at the Montreux Jazz Festival and at Carnegie Hall. He has conducted orchestras in Los Angeles, Nashville, Dallas and London, England.

"The Mayor's Prayer Breakfast is an inspirational morning that we look forward to every year," said Ridgeland Chamber Executive Director Linda Bynum. "We are thrilled that Dr. Phillips accepted our invitation to travel to Ridgeland and share his story of faith. Dr. Phillips has spent a life-time alongside world renowned evangelist Billy Graham and we know his message will further strengthen our community spirit and unite us as Mississippians and Americans."

Ridgeland Mayor Gene McGee stressed the importance of coming together as a city and sharing friendships and fellowships while thanking God for all the blessings we enjoy.

The breakfast will be catered by the Ridgeland Chamber's 2013 Business of the Year Cool Water Catering & Events.

Tickets may be purchased by calling the Ridgeland Chamber office at 601-991-9996 or registering online at www.ridgelandchamber.com.

Sponsors include: BankPlus; Butler Snow, LLP; CenterPoint Energy; Community Bank; Community Trust Bank; Entergy; Hederman Brothers; Hilton Jackson; Madison County Journal; Neel-Schaffer, Inc.; Regions Bank; Renasant Bank; Stewart Sneed Hewes/BancorpSouth Insurance; Trustmark National Bank; Waggoner Engineering, Inc.; Wells Marble & Hurst, PLLC; The Clarion Ledger Media Group and The Township at Colony Park a Kerioth Corporation Development.



Dr. Thomas K. Phillips
Vice President, Billy
Graham Library
Billy Graham Evangelistic
Association

Ridgeland Chamber's Make A Difference Day Serves Thanksgiving to Our Daily Bread Ministries

On Saturday, October 25, volunteers from the Ridgeland Chamber of Commerce gathered food items outside of Ridgeland's Kroger, Save-A-Lot and Mac's Fresh Market grocery stores for Thanksgiving meals for Our Daily Bread Ministries.

Volunteers collected canned vegetables and fruits, 5 lb. bags of flour, sugar, rice, black-eyed peas and dried lima beans; boxes of stuffing and bread mix; cans of cranberry sauce, onion seasoning and seasoned salts and boxes of cake mix and frosting.

A special thank you to general managers Ric Martinez of Mac's Fresh Market on Highway 51; James Smith of Kroger and Jerrald Green of Save-A-Lot, both stores located on Old Canton Road for assisting the Chamber volunteers with the food drive.

"During the approaching holiday season, when we give thanks for our many blessings, hundreds of Madison County neighbors don't have enough food to feed their families," said Linda Bynum, Executive Director of the Ridgeland Chamber of Commerce.

"When we found out that the pantry shelves at Our Daily Bread Ministries are bare, and the organization has over 200 families to feed this Thanksgiving, there was no question what our Make A Difference Day project would be," Bynum said.

Our Daily Bread Ministries, located at 315 Garrett Street in Canton, has been serving the Madison County area since 2002.

The ministry includes providing a noon meal to disadvantaged individuals in Madison County. The group delivers 120 meals a day to homebound residents who are elderly and/or disabled. And, approximately 70 individuals attend the group's daily meal service at noon.

"This food drive represents a way we as Christians are filling out the Gospel call of Jesus' words to feed the hungry," said Sister Mary Anne, a member of Our Daily Bread Ministries Board of Directors. "We are overwhelmed at the generosity of the people in our area and our hearts are filled with gratitude," she added.

"The Ridgeland Chamber wishes to thank our community for providing our hungry neighbors with hearty meals, hope and a reason to give thanks," Bynum said.



A Thanksgiving feast for Our Daily Bread Ministries. Thank you Madison County for giving our hungry neighbors a reason to give thanks!



Robby Channell, Baptist Health Systems, and his daughter Mattie Jane and wife Vickie, volunteer at Kroger on Old Canton Road.



Junior Diplomat Co-Captain Caroline Burford of Jackson Academy collects canned goods at Mac's Fresh Market on Highway 51.



Dorothy Jackson and her team from Aerotek (Rick Stanford and Ashley Kelly) were at Save-A-Lot Foods on Old Canton Road.

RIDGELAND DEPARTMENTS



Community Development
ALAN HART
Director
alan.hart@ridgelandms.org



Fire Department
MATT BAILEY
Fire Chief
matt.bailey@ridgelandms.org



Public Works
JOHN M. MCCOLLUM
Director
mike.mccollum@ridgelandms.org



Finance and Administration
PAULA TIERCE
City Clerk/Human Resources Director
paula.tierce@ridgelandms.org



Police Department
RANDY TYLER
Chief of Police
randy.tyler@ridgelandms.org



Recreation & Parks Department
CHRISTOPHER CHANCE
Director
chris.chance@ridgelandms.org

City Meetings

Mayor and Board of Aldermen Meeting
1st & 3rd Tuesday - 6 p.m.

Work session is held on Mondays prior to Board Meeting - 6 p.m.

Architectural Review Board
2nd & 4th Tuesday - 6 p.m.

Bill Dicken - Chairman
Karen Bishop, Ron Blaylock, Tom Bobbitt, Donald Pendergrast, Glenn Ray, Alex Ross, Connie Suber

Keep Ridgeland Beautiful
First Monday - 4:30 p.m.

Jan Richardson - Chairman
JoAnn Alford, Lynda Assink, Wendy Bourdin, Pat Busby, Claire Jackson, Phyllis Parker, Lea Anne Stacy

Community Awareness Committee
Fourth Monday - 5:30 p.m.

Drew Malone - Chairman
Carla Palmer Allen, Shirley Gill, Dawn Hall, Vicki Heath, Scott Higginbotham, Lee Hutchings, Mike Smith, Deborah Thomas, Darlene Turner

Contractors Board of Adjustment and Appeals

Lantz Kuykendall - Chairman
Terry Evans, Ronnie Hales, David Pursell, Steve Rimmer, Ricky Skeen, Clay Sutherland, Leroy Tubbs, Keith West

Recreation & Parks Advisory Committee
3rd Tuesday - 6:30 p.m.

Larry Anderson, Gabe Coker, John Evans, James Freeman, Jay Harris, Wayne Jimenez, Jerry Neill

Zoning Board

Thursdays, the week of Mayor and Board of Aldermen meeting - 6 p.m.

Bernie Giessner - Chairman
Michelle Caballero, Walter Cox, Philip Huskey, Mark Irby, Larry Miller, Julius Murray, Rhett Stubblefield

City of Ridgeland

City Hall, 304 Highway 51, Ridgeland, Mississippi 39157
601-856-7113, www.ridgelandms.org

Aldermen

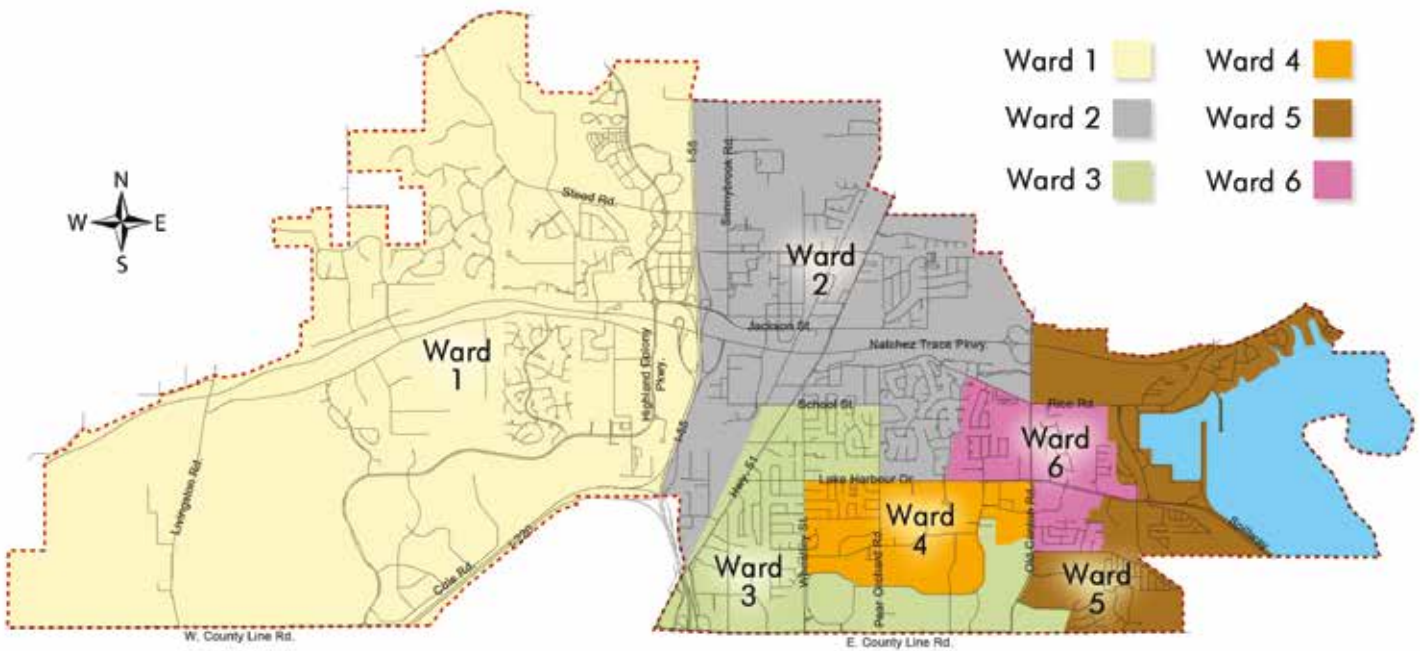
- D.I. Smith**, Alderman-at-Large 601-707-8845
- Ken Heard**, Mayor Pro Tempore, Ward 1 601-856-7727
- Chuck Gautier**, Ward 2 601-856-1291
- Kevin Holder**, Ward 3 601-856-1950
- Brian Ramsey**, Ward 4 601-506-1979
- Scott Jones**, Ward 5 601-856-6861
- Wesley Hamlin**, Ward 6 601-454-0353

City Directory

- Animal Control**
animalcontrol@ridgelandms.org 601-856-2121
- Anonymous Tip Line**
(*criminal investigations division*) 601-853-2006
- City Hall/Mayor's Office** 601-856-7113
- Community Development Department**
(*development, property maintenance, zoning, signs, permits*) 601-856-3877
- Community Police Officers**
(*residential/neighborhood concerns and service*) 601-502-6040 & 601-940-9030
- Court Clerk**
(*traffic violations, misdemeanors and fines*) 601-853-2001
- Emergency** (*police and fire dispatch center*) 9-1-1
- Finance and Administration**
(*business licenses, elections, meeting minutes, budget, public records*) 601-856-7113
- Fire Department**
(*non-emergency calls, safety education programs*) 601-856-7004
- Police Department**
(*non-emergency calls, public safety concerns*) 601-856-2121
- Public Works Department**
(*road, garbage, recycling, water, storm water*) 601-853-2027
- Recreation and Parks**
(*special events, athletics and program registration, park information*) 601-853-2011
- Utility Billing Department** (*water, sewer, garbage, and recycling billing*)
utilitybilling@ridgelandms.org 601-856-3938

RIDGELAND ALDERMEN

To learn more about your elected representatives, go to www.ridgelandms.org/electedofficials/.



D.I. Smith
Alderman At-Large
601-707-8845



Ken Heard
Ward 1
Mayor Pro Tempore
601-856-7727



Chuck Gautier
Ward 2
601-856-1291



Kevin Holder
Ward 3
601-238-5361



Brian Ramsey
Ward 4
601-506-1979



Scott Jones
Ward 5
601-206-5416



Wesley Hamlin
Ward 6
601-454-0353



☆ *The* BIKE CROSSING ☆



NORTH PARK MALL



COOL WATER
CATERING & EVENTS

