

VETERANS MEMORY PARK IN RIDGELAND, MS

WWW.VETERANSMEMORYPARKINRIDGELAND.COM

SPONSORED
NCH LOCATION



**FOR MORE INFORMATION, CONTACT:
VETERANS MEMORY PARK IN RIDGELAND COMMITTEE:**

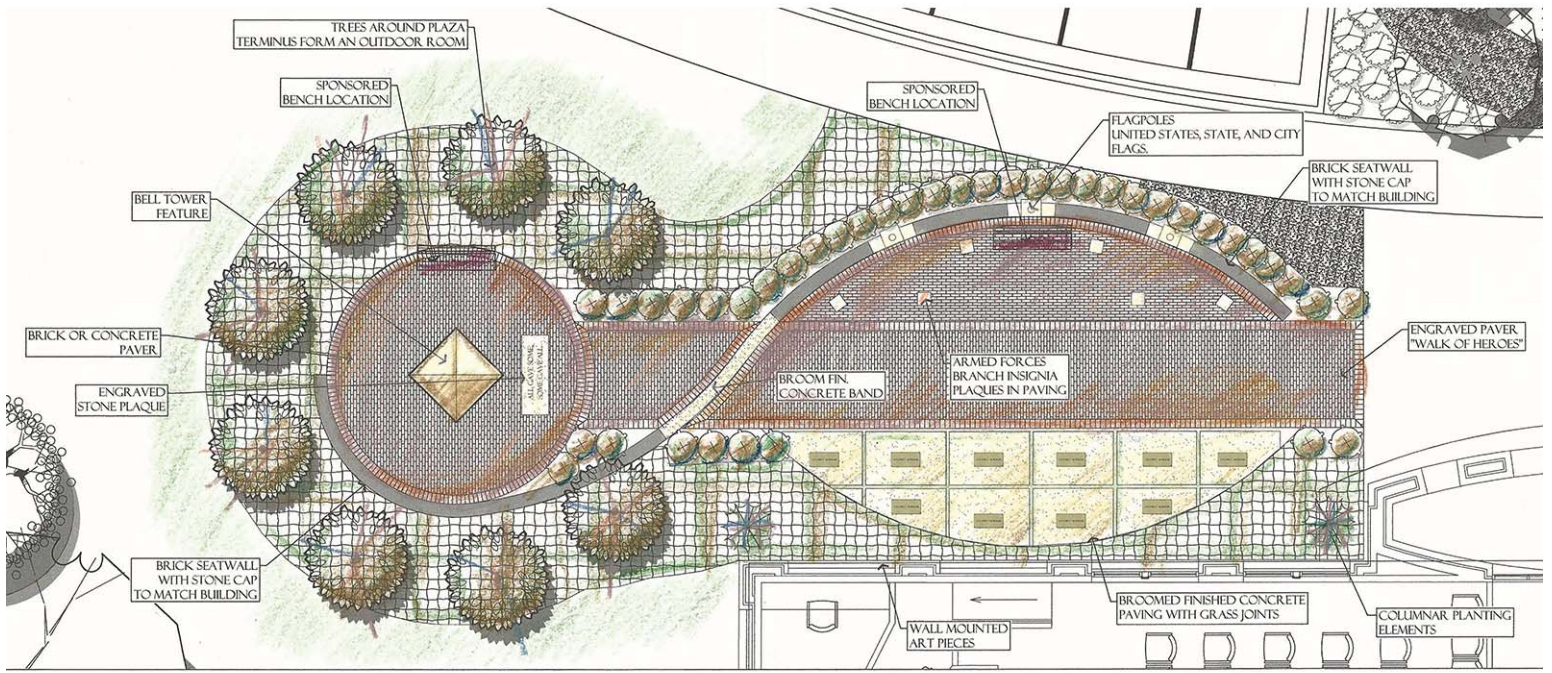
Mike McCollum, Chairman - (601) 853-2027

Greg Starnes, Treasurer - (601) 672-7265

WWW.VETERANSMEMORYPARKINRIDGELAND.COM



VETERANS MEMORY PARK IN RIDGELAND, MS



CONCEPTUAL PLAN



MILITARY BRANCH PLAQUES

SPONSORSHIP OPPORTUNITIES

\$200 - 4" x 8" Engraved Brick Paver (Located along the "Walk of Heroes")

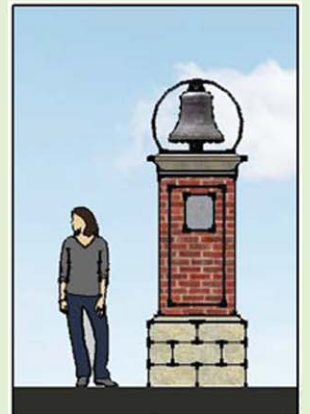
\$500 - 8" x 8" Engraved Brick Paver (Located around the Bell Tower)

(10) \$5,000 - Brass Plaque mounted on Concrete Paver

(2) \$10,000 - Brass Plaque mounted on Bench

(1) \$50,000 - Engraved Plaque at the Bell Tower

*All Engraved Bricks and Plaques must include the name(s) of Veteran(s)



FOR MORE INFORMATION, CONTACT:
VETERANS MEMORY PARK IN RIDGELAND COMMITTEE:

Mike McCollum, Chairman - (601) 853-2027

Greg Starnes, Treasurer - (601) 672-7265

WWW.VETERANSMEMORYPARKINRIDGELAND.COM

VETERANS MEMORY PARK IN RIDGELAND, MS

FOR MORE INFORMATION: @VETERANSMEMORYPARKINRIDGELAND ON FACEBOOK
AND WWW.VETERANSMEMORYPARKINRIDGELAND.COM

NAME OF PERSON SUBMITTING THIS FORM: _____

PHONE NUMBER: _____

EMAIL ADDRESS: _____

SIGNATURE BRICK ORDER FORM

(STANDARD ABBREVIATIONS SHOULD BE USED WHERE APPROPRIATE. ONLY 14 CHARACTERS PER LINE.
PLEASE PRINT. \$200 CONTRIBUTION FOR A 4x8 BRICK.)

(NAME) LINE 1 _____

(RANK) LINE 2 _____

(BRANCH OF SERVICE) LINE 3 _____

(THE FOLLOWING LINES ARE FOR USE WITH 8"x8" DOUBLE BRICKS ONLY.
\$500 CONTRIBUTION FOR A 8x8 BRICK.)

(CONFLICT) LINE 4 _____

(DATES OF SERVICE) LINE 5 _____

(HOMETOWN OR HIGHEST MEDAL) LINE 6 _____

PLEASE ATTACH TYPED COPIES OF YOUR ORDER TO ASSURE CORRECT SPELLING AND
SUBMIT FORMS TO CITY OF RIDGELAND, ATTN: MIKE McCOLLUM,
PO BOX 317, RIDGELAND, MS 39158
AND MAKE CHECKS PAYABLE TO THE "VETERANS MEMORY PARK IN RIDGELAND"

ALL TEXT SHALL BE SUBJECT TO REVIEW AND APPROVAL OF THE VETERANS MEMORY PARK COMMITTEE

Mike McCollum, Chairman - (601) 853-2027

Greg Starnes, Treasurer - (601) 672-7265