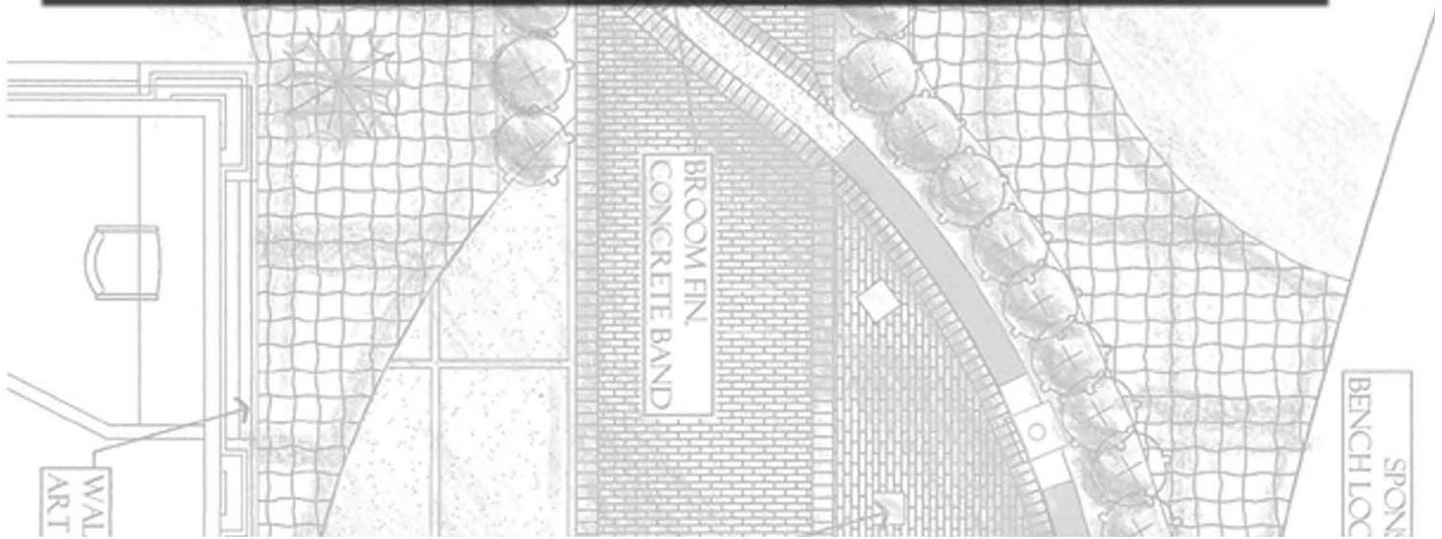


# VETERANS MEMORY PARK IN RIDGELAND, MS

SPONSORED  
BENCH LOCATION



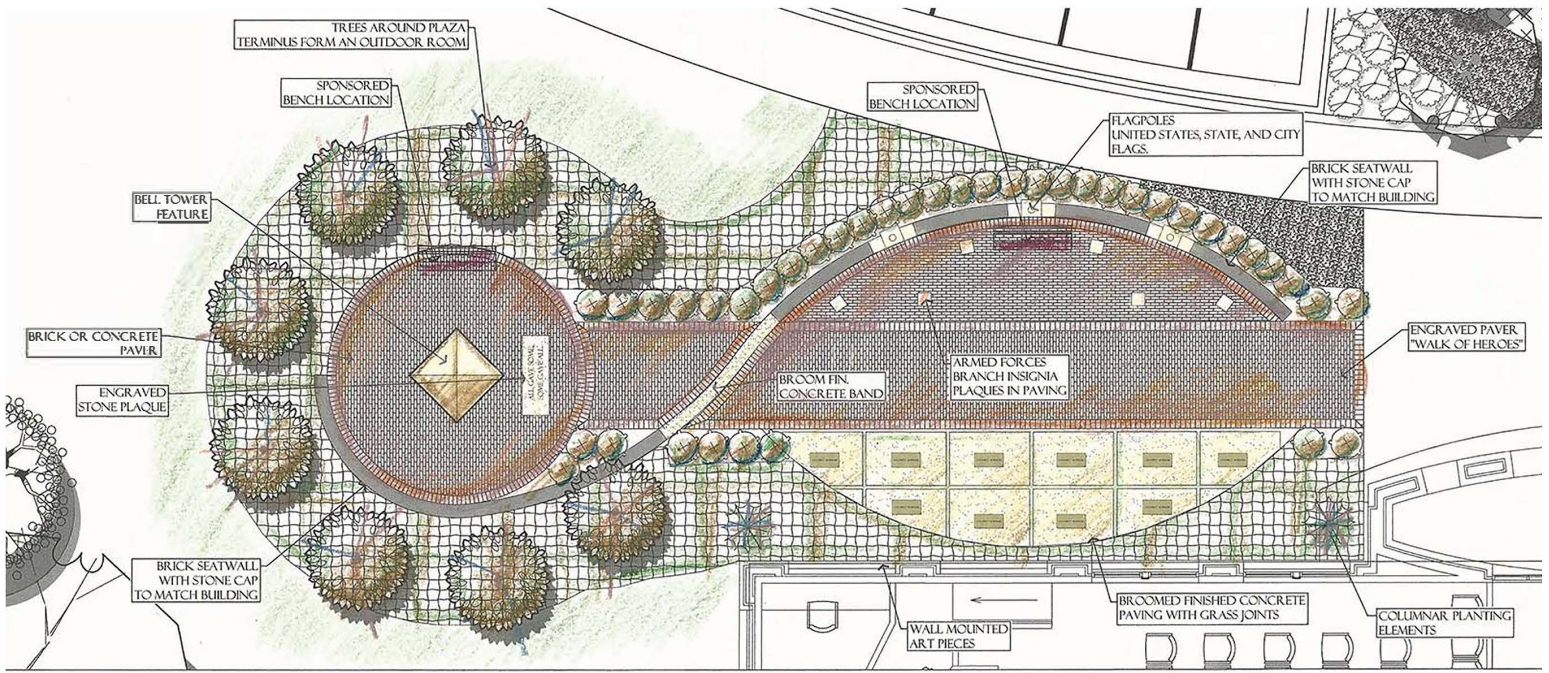
**FOR MORE INFORMATION, CONTACT:  
VETERANS MEMORY PARK IN RIDGELAND COMMITTEE:**

Mike McCollum, Chairman - (601) 853-2027

Greg Starnes, Treasurer - (601) 898-5500



# VETERANS MEMORY PARK IN RIDGELAND, MS



## CONCEPTUAL PLAN



## MILITARY BRANCH PLAQUES

## SPONSORSHIP OPPORTUNITIES

**\$200 - 4" x 8" Engraved Brick Paver (Located along the "Walk of Heroes")**

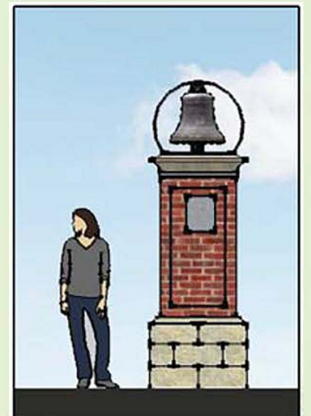
**\$500 - 8" x 8" Engraved Brick Paver (Located around the Bell Tower)**

**(10) \$5,000 - Brass Plaque mounted on Concrete Paver**

**(2) \$10,000 - Brass Plaque mounted on Bench**

**(1) \$50,000 - Engraved Plaque at the Bell Tower**

**\*All Engraved Bricks and Plaques must include the name(s) of Veteran(s)**



**FOR MORE INFORMATION, CONTACT:**

**VETERANS MEMORY PARK IN RIDGELAND COMMITTEE:**

**Mike McCollum, Chairman - (601) 853-2027**

**Greg Starnes, Treasurer - (601) 898-5500**

# VETERANS MEMORY PARK IN RIDGELAND, MS

NAME OF PERSON SUBMITTING THIS FORM: \_\_\_\_\_

PHONE NUMBER: \_\_\_\_\_

EMAIL ADDRESS: \_\_\_\_\_

## SIGNATURE BRICK ORDER FORM

(NAME)            LINE 1    \_\_\_\_\_

(RANK)            LINE 2    \_\_\_\_\_

(BRANCH OF SERVICE)    LINE 3    \_\_\_\_\_

THE FOLLOWING LINES ARE FOR USE WITH 8”X8” DOUBLE BRICKS ONLY.

---

(CONFLICT)        LINE 4    \_\_\_\_\_

(DATES OF SERVICE)    LINE 5    \_\_\_\_\_

(HOMETOWN OR HIGHEST MEDAL)    LINE 6    \_\_\_\_\_

PLEASE ATTACH TYPED COPIES OF YOUR ORDER TO ASSURE CORRECT SPELLING AND  
SUBMIT FORMS TO CITY OF RIDGELAND, ATTN: MIKE MCCOLLUM,  
PO BOX 217, RIDGELAND, MS 39158  
AND MAKE CHECKS PAYABLE TO THE “CITY OF RIDGELAND”  
FOR: VETERANS MEMORY PARK IN RIDGELAND

Mike McCollum, Chairman - (601) 853-2027  
Greg Starnes, Treasurer - (601) 898-5500