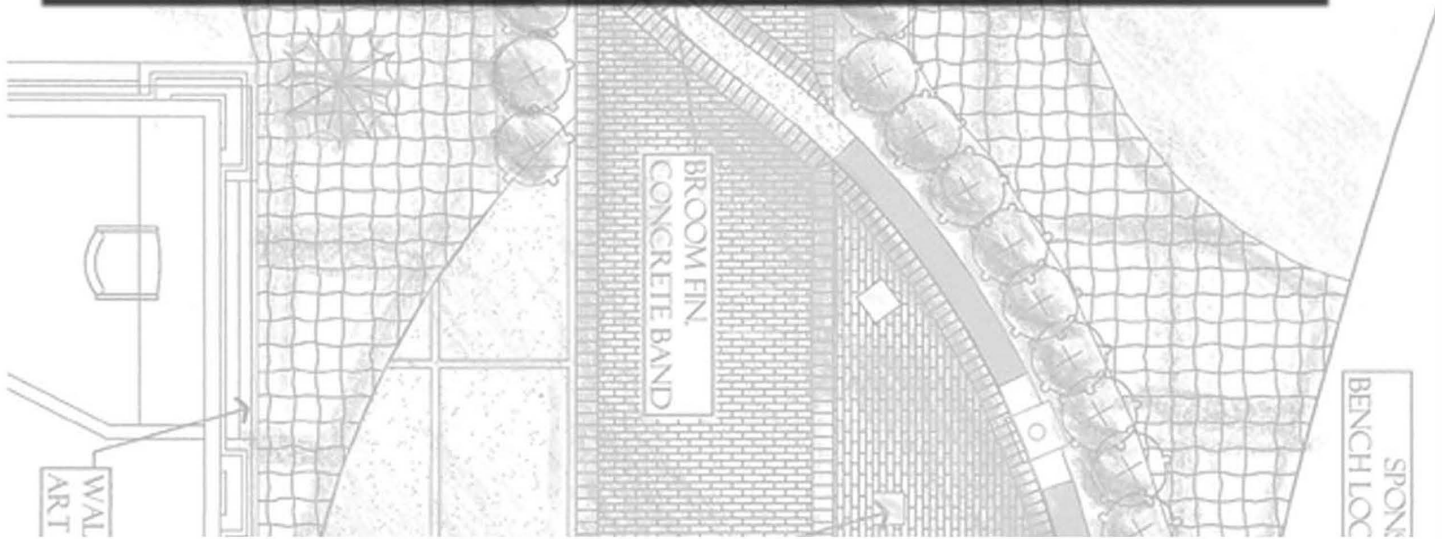


# VETERANS MEMORY PARK IN RIDGELAND, MS

SPONSORED  
BENCH LOCATION



**FOR MORE INFORMATION, CONTACT:  
VETERANS MEMORY PARK IN RIDGELAND COMMITTEE:**

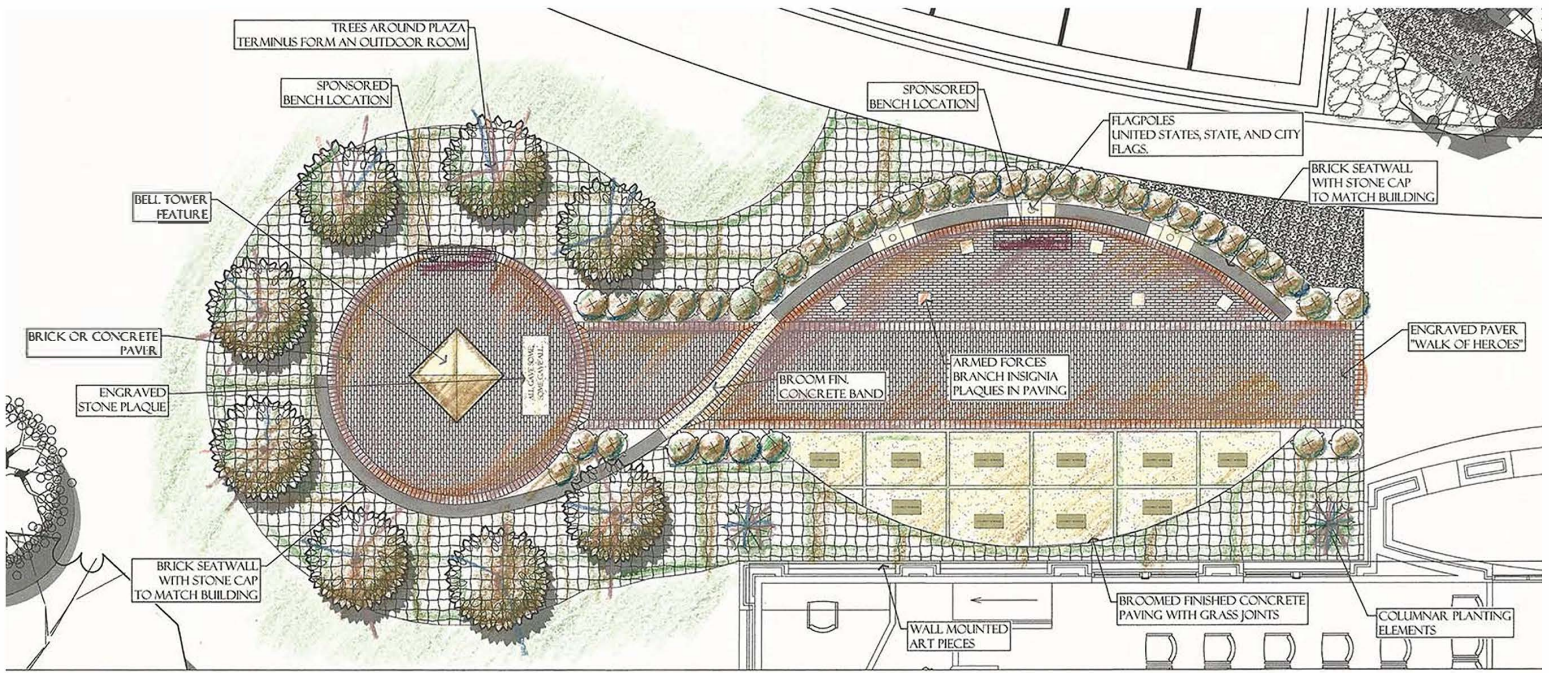
Mike McCollum, Chairman - (601) 953-2828

Greg Starnes, Treasurer - (601) 898-5500





# VETERANS MEMORY PARK IN RIDGELAND, MS



## CONCEPTUAL PLAN



## MILITARY BRANCH PLAQUES

## SPONSORSHIP OPPORTUNITIES

\$200 - 4" x 8" Engraved Brick Paver (Located along the "Walk of Heroes")

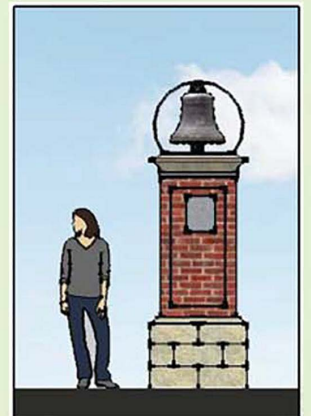
\$500 - 8" x 8" Engraved Brick Paver (Located around the Bell Tower)

(10) \$5,000 - Brass Plaque mounted on Concrete Paver

(2) \$10,000 - Brass Plaque mounted on Bench

(1) \$50,000 - Engraved Plaque at the Bell Tower

\*All Engraved Bricks and Plaques must include the name(s) of Veteran(s)



**FOR MORE INFORMATION, CONTACT:  
VETERANS MEMORY PARK IN RIDGELAND COMMITTEE:**

Mike McCollum, Chairman - (601) 953-2828  
Greg Starnes, Treasurer - (601) 898-5500

# VETERANS MEMORY PARK IN RIDGELAND, MS

NAME OF PERSON SUBMITTING THIS FORM: \_\_\_\_\_

PHONE NUMBER: \_\_\_\_\_

EMAIL ADDRESS: \_\_\_\_\_

## SIGNATURE BRICK ORDER FORM

(NAME) LINE 1 \_\_\_\_\_

(RANK) LINE 2 \_\_\_\_\_

(BRANCH OF SERVICE) LINE 3 \_\_\_\_\_

THE FOLLOWING LINES ARE FOR USE WITH 8"X8" DOUBLE BRICKS ONLY.

---

(CONFLICT) LINE 4 \_\_\_\_\_

(DATES OF SERVICE) LINE 5 \_\_\_\_\_

(HOMETOWN OR HIGHEST MEDAL) LINE 6 \_\_\_\_\_

PLEASE ATTACH TYPED COPIES OF YOUR ORDER TO ASSURE CORRECT SPELLING AND

SUBMIT FORMS TO **CITY OF RIDGELAND**

Attn: **Veterans Memory Park**

**PO BOX 217, RIDGELAND, MS 39158**

AND MAKE CHECKS PAYABLE TO THE "CITY OF RIDGELAND"

FOR: **VETERANS MEMORY PARK IN RIDGELAND**

Mike McCollum, Chairman - (601) 953-2828

Greg Starnes, Treasurer - (601) 898-5500